

MC38-hLILRB4

品系基本信息

目录号 NMC-230084

细胞系名称 MC38-hLILRB4

品系状态 成瘤性验证完成

品系描述 LKRB4基因人源化的MC38小鼠结肠癌细胞系

*使用本品系发表的文献需注明: MC38-hLILRB4 cell line (Cat. NO. NMC-230084) was purchased from Shanghai Model Organisms Center, Inc..

验证数据

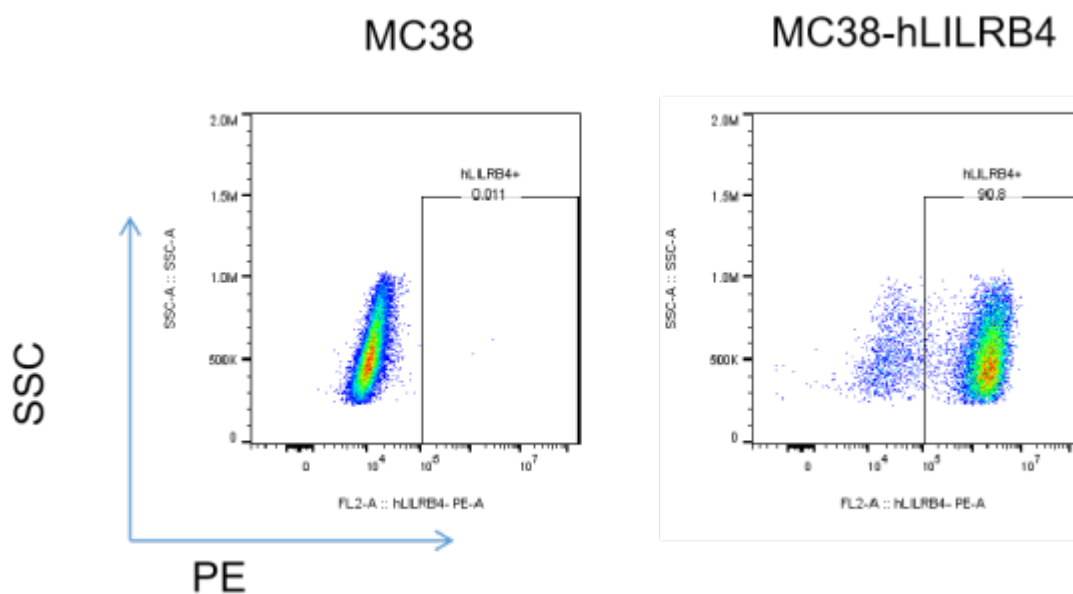


Figure 1. hLILRB4 expression in wild-type MC38 and MC38-hLILRB4 cell line.

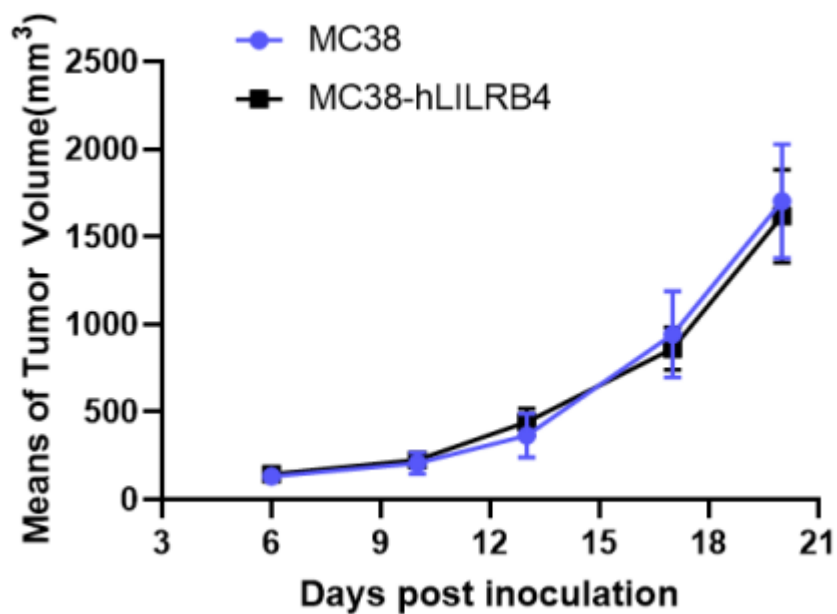


Figure 2. Tumor growth curve of MC38 and MC38-hLILRB4 syngeneic model (n=6).

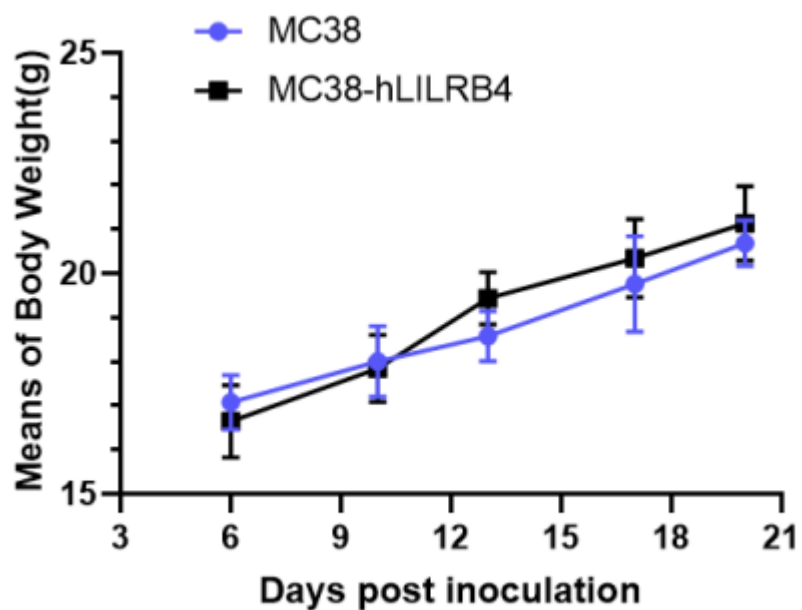


Figure 3. Body weight curve of MC38 and MC38-hLILRB4 syngeneic model (n=6).

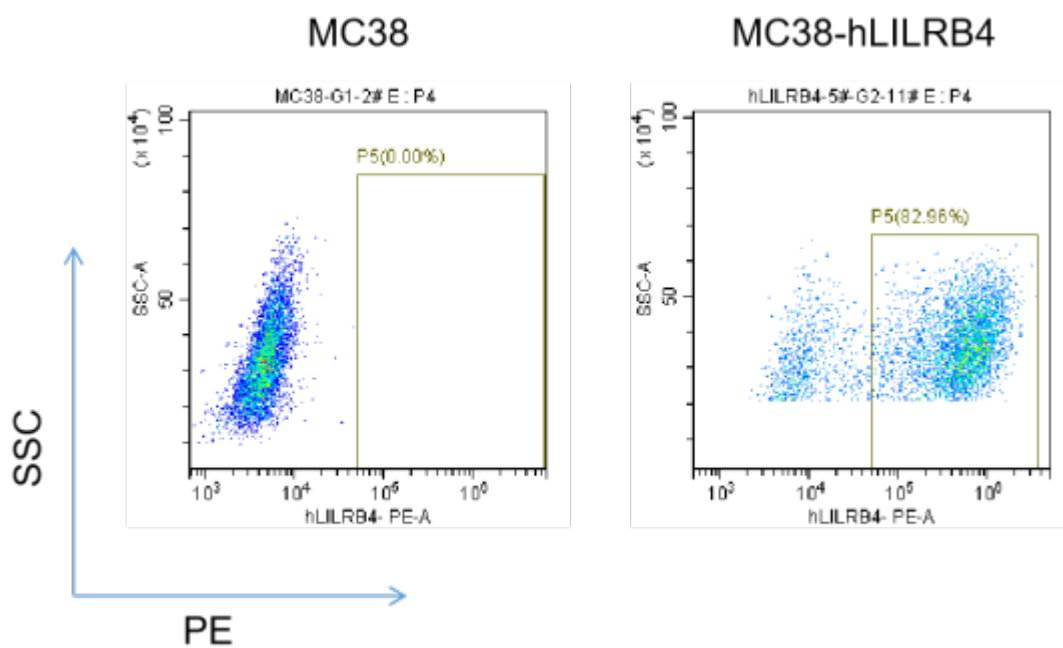


Figure 4. The expression of hLILRB4 in humanized modified tumors by FACS.