

Pdgfra-Dre

品系全名	C57BL/6Smoc- <i>Pdgfra</i> ^{em(Dre-WPRE-pA)Smoc}
目录号	NM-KI-220193
品系状态	活体

基因信息

基因名 Pdgfra	基因曾用名	CD140a; Pdgfr-2; AI115593
	NCBI ID	18595
	MGI ID	97530
	Ensembl ID	ENSMUSG00000029231
	人类同源基因	PDGFRA

品系描述

将Dre-WPRE-pA插入到小鼠Pdgfra基因起始密码子处。

*使用本品系发表的文献需注明: Pdgfra-Dre mice (Cat. NO. NM-KI-220193) were purchased from Shanghai Model Organisms Center, Inc..

验证数据

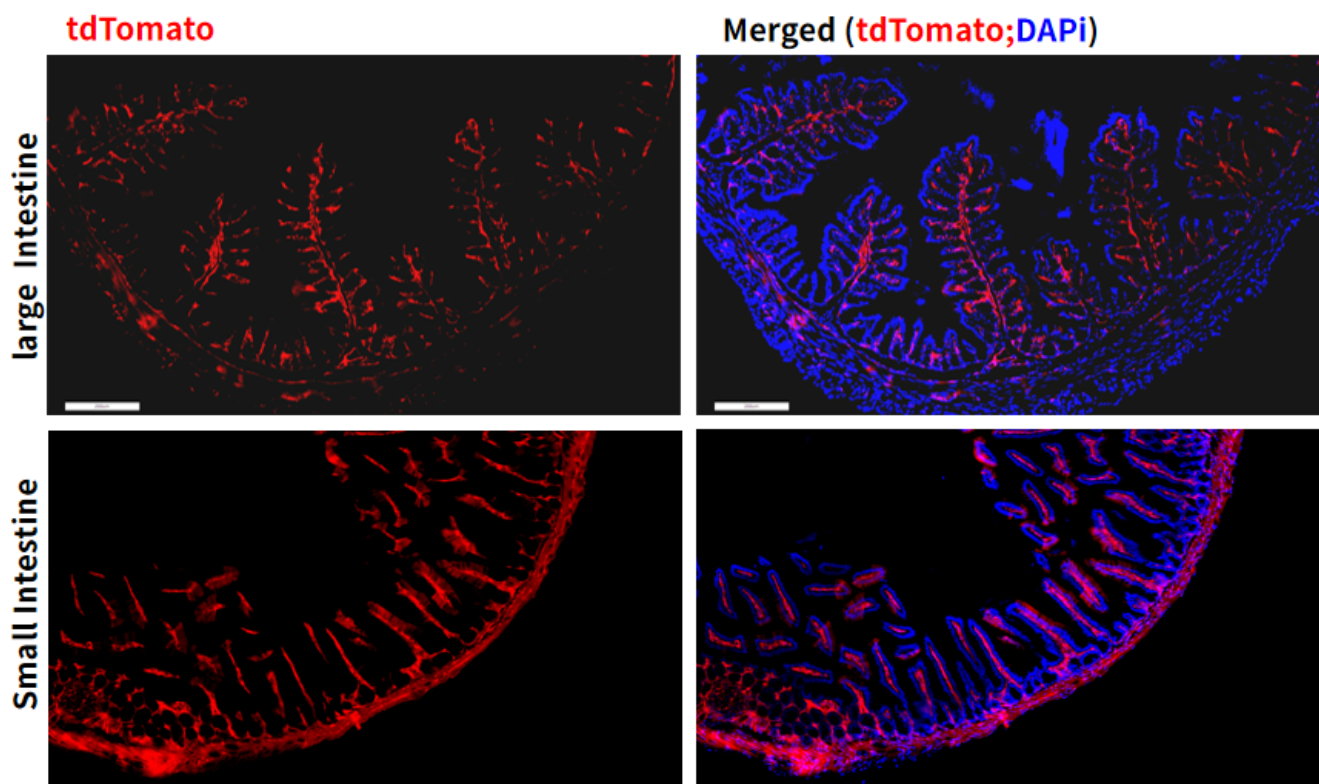


Fig1. Cre mediated recombination in small intestine and large intestine of $Pdgfra^{Dre/+}$; $Rosa26^{tdTomato/+}$ mouse.

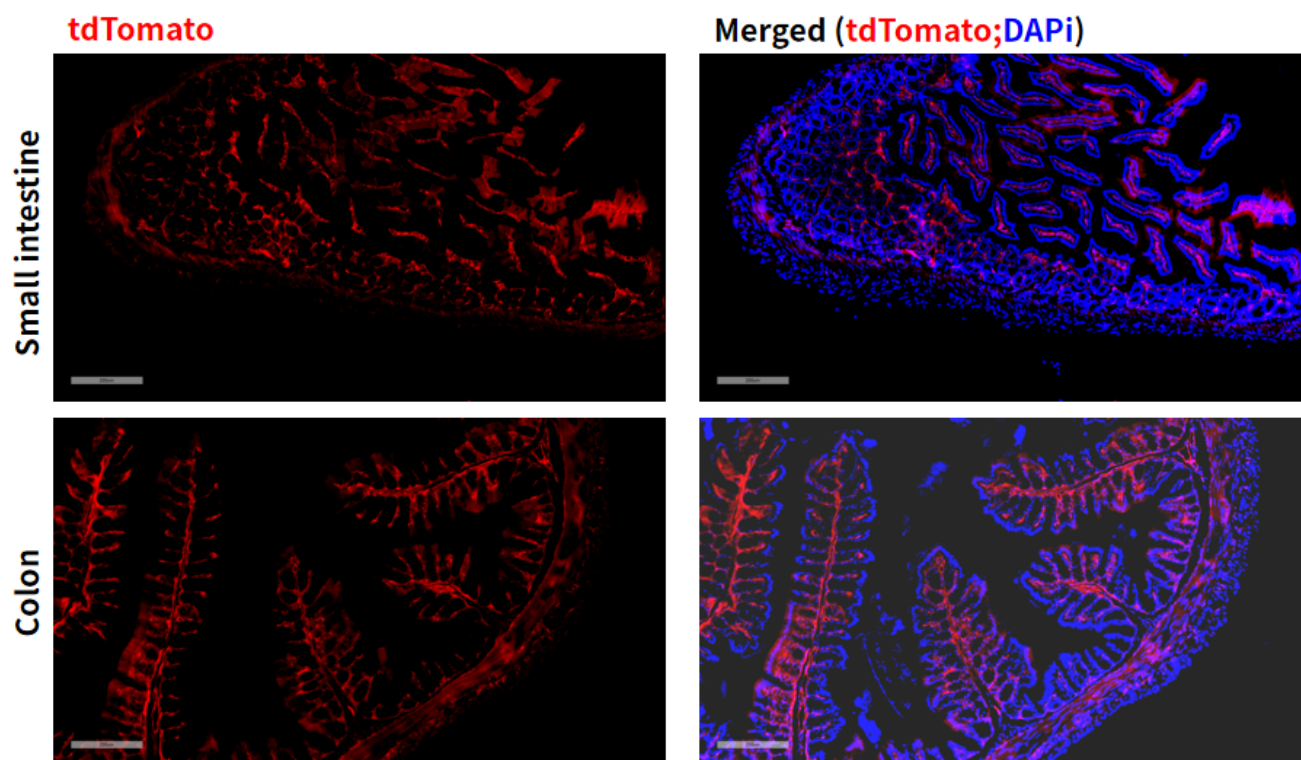


Fig2. Cre mediated recombination in small intestine and colon of $Pdgfra^{Dre/+}$; $Rosa26^{tdTomato/+}$ mouse.

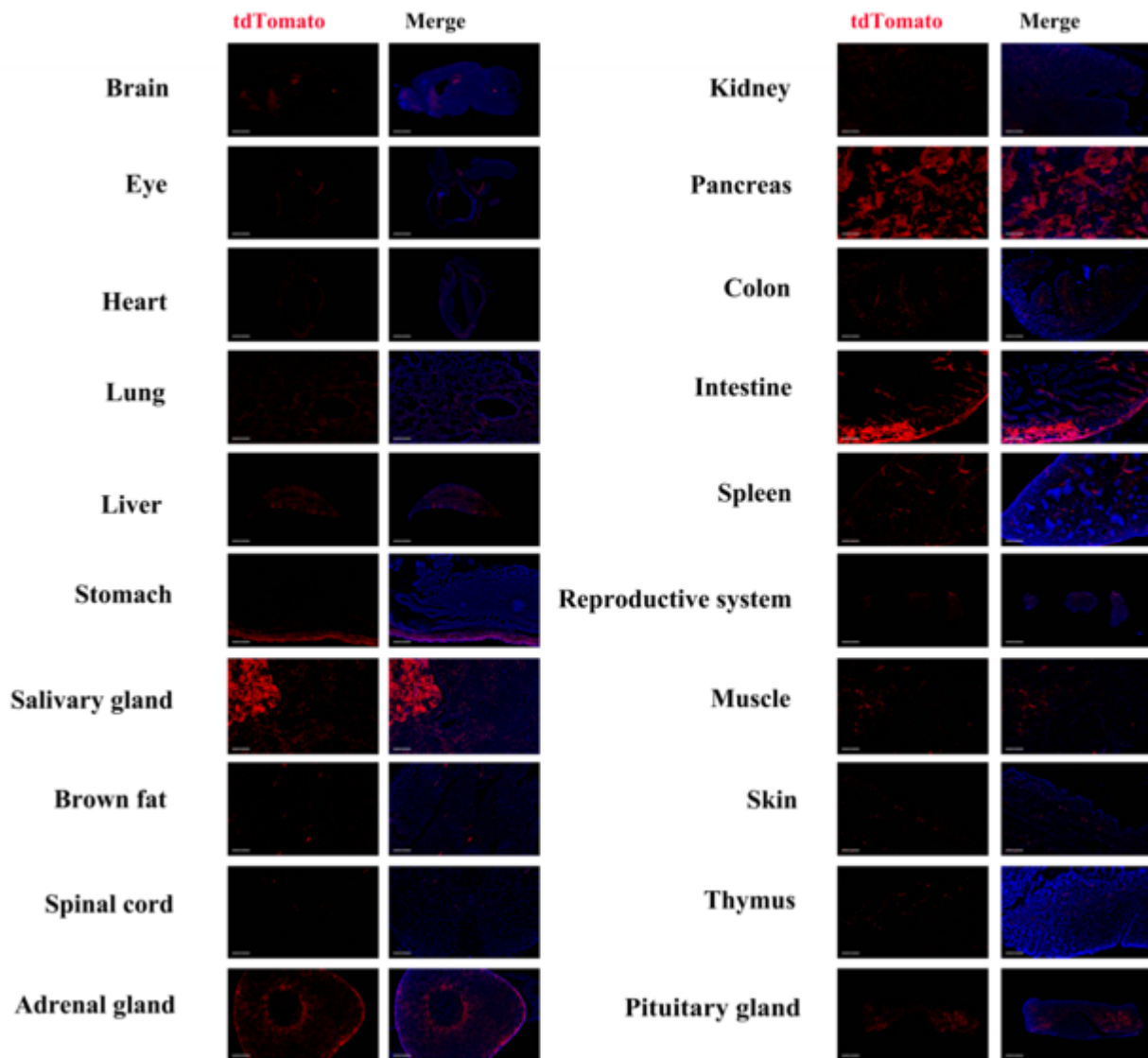


Fig3. Detection of tdTomato(red) in various tissues of $Pdgfra^{Dre/+}; Rosa26^{tdTomato/+}$ mouse. Expression tissues include: brain, retina, heart, lung, liver, stomach, salivary gland, adrenal gland, kidney, pancreas, small and large intestine, spleen, testis, muscle, skin, thymus, pituitary. A few cells expressed in brown fat, spinal cord.(8.5-weeks old, male) (For more detailed information please contact our technical advisor.)