

MC38-hPD-L1

品系基本信息

目录号 NM-S13-TM01

细胞系名称 MC38-*Cd274*^{em1(hPD-L1)/Smoc}

品系状态 体内药效验证完成

品系描述 PD-L1基因人源化的MC38结肠癌细胞系。

*使用本品系发表的文献需注明: MC38-hPD-L1 cell line (Cat. NO. NM-S13-TM01) was purchased from Shanghai Model Organisms Center, Inc..

验证数据

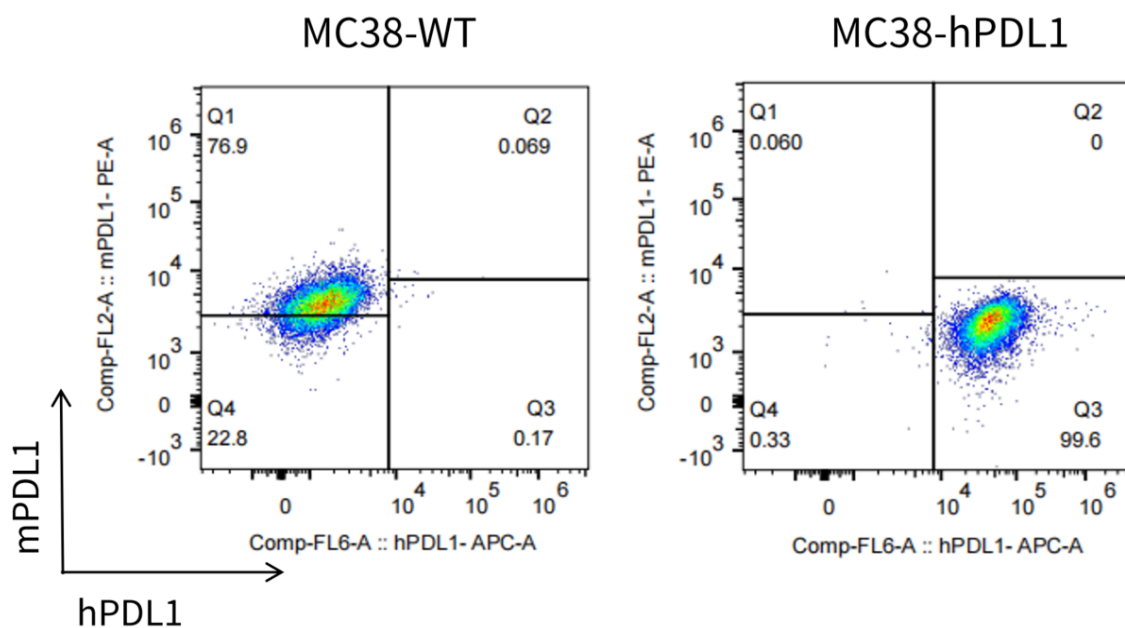


Figure 1. hPD-L1 expression in wild-type MC38 and MC38-hPD-L1 cell lines.

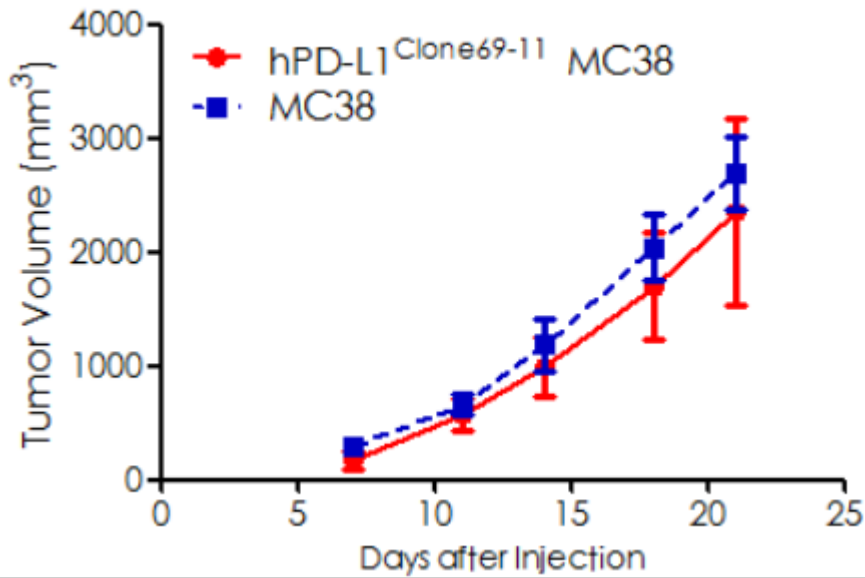


Figure 2. Tumor growth curve of MC38-hPDL1 syngeneic model (n=3).

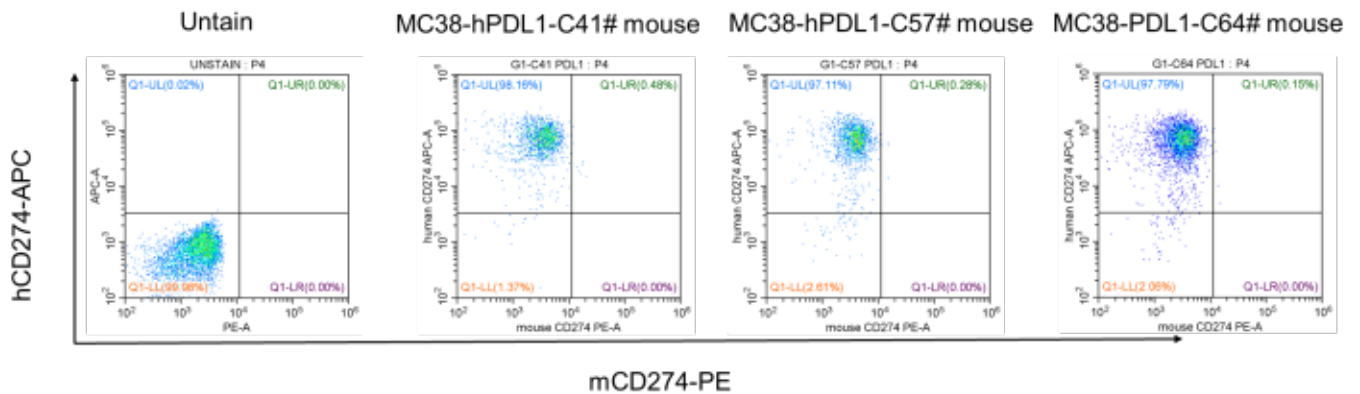


Figure 3. The expression of hPDL1 in humanized modified tumors by FACS.

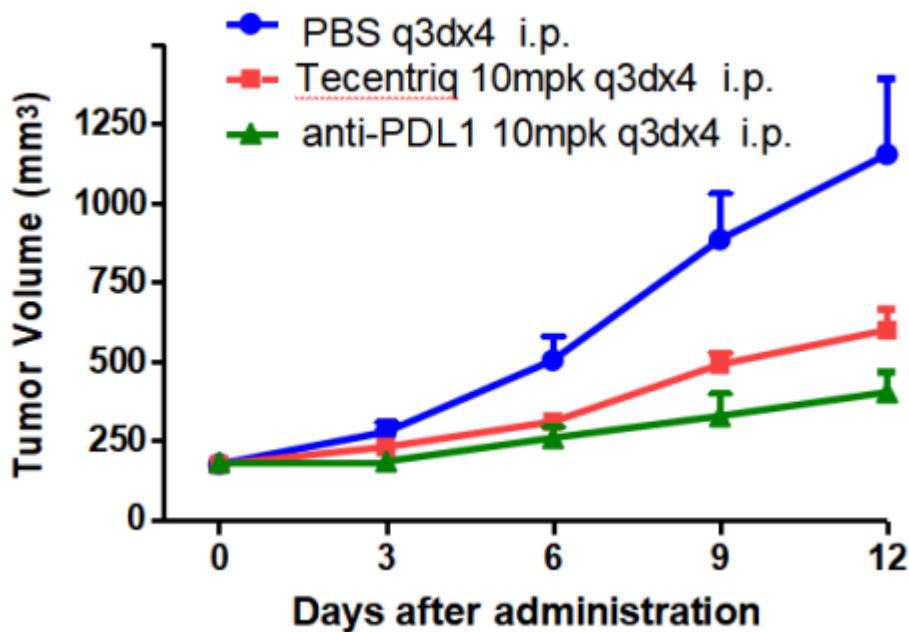


Figure 4. Antitumor activity of Tencentriq and another anti-PDL1 antibody (n=8).
