

B16F10-hPD-L1

品系基本信息

目录号	NM-S31A-TM01
细胞系名称	B16F10- <i>Cd274</i> ^{em1(hPDL1)/Smoc}
品系状态	成瘤性验证完成
品系描述	B16F10-hPDL1 细胞系为定点插入人源 PDL1 基因并破坏鼠源 PDL1 的 B16F10 结肠癌肿瘤细胞系，经检测，该细胞系中可检测到活跃的人源 PDL1 的表达，无鼠源 PDL1 表达，成瘤性方面与野生型 B16F10 细胞系趋势相一致。 *使用本品系发表的文献需注明: B16F10-hPD-L1 cell line (Cat. NO. NM-S31A-TM01) was purchased from Shanghai Model Organisms Center, Inc..

验证数据

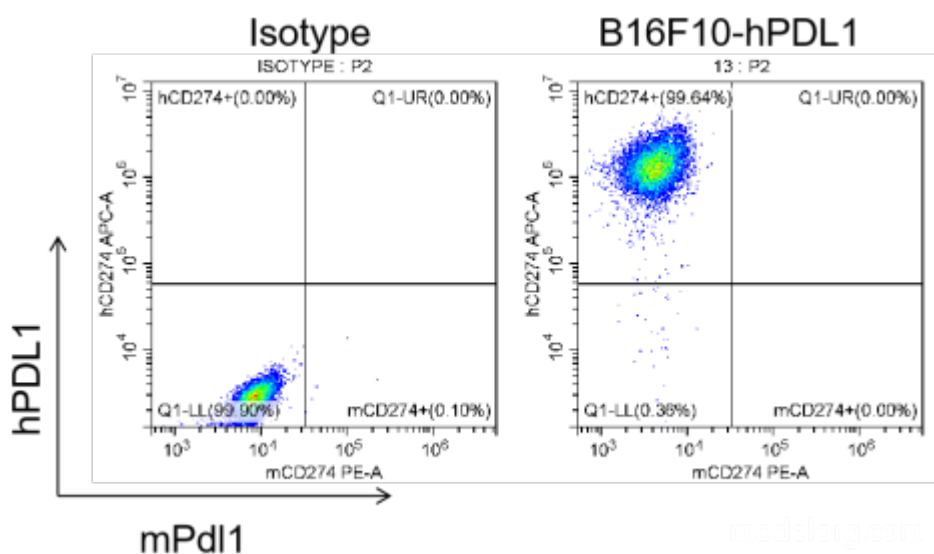


Figure 1. hPDL1 expression in B16F10-hPDL1 cell lines.

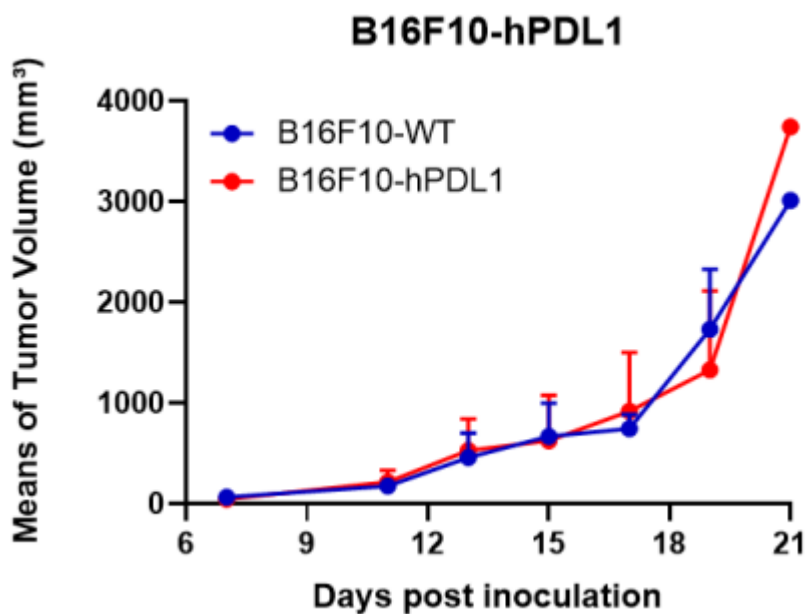


Figure 2. Tumor growth curve of B16F10-hPDL1 syngeneic model (n=5).

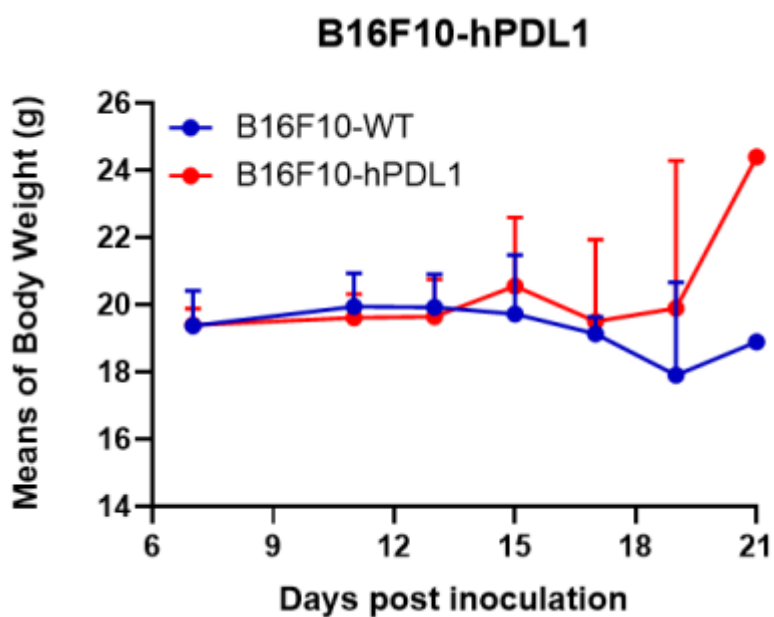


Figure 3. Body weight change of B16F10-hPDL1 syngeneic model (n=5).

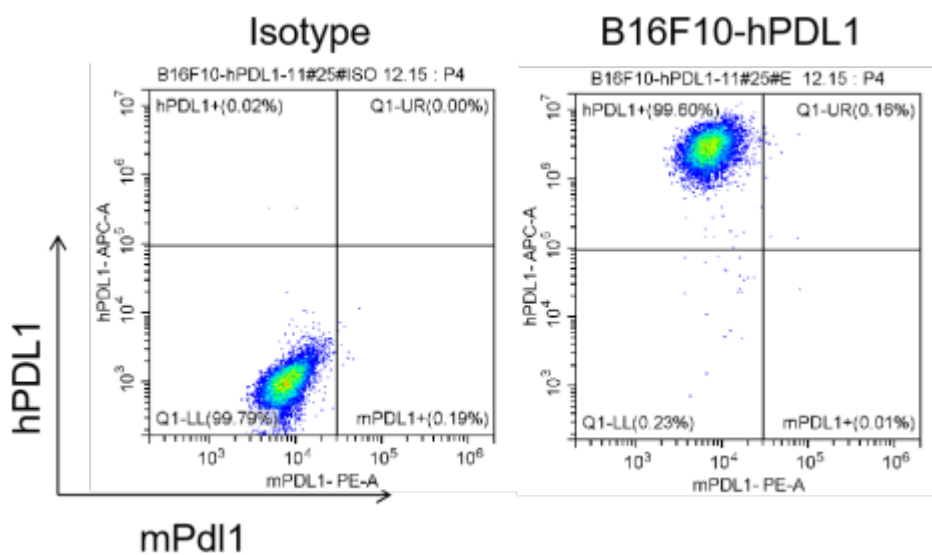


Figure 4. The expression of hPDL1 in humanized modified tumors by FACS