

MC38-hCLDN 18.2

品系基本信息

目录号 NM-S13-TM10

细胞系名称 MC38-Tg(hCLDN 18.2)/Smoc

品系状态 成瘤性验证完成

品系描述 CLDN 18.2基因人源化的MC38结肠癌细胞系。

*使用本品系发表的文献需注明: MC38-hCLDN 18.2 cell line (Cat. NO. NM-S13-TM10) was purchased from Shanghai Model Organisms Center, Inc..

验证数据

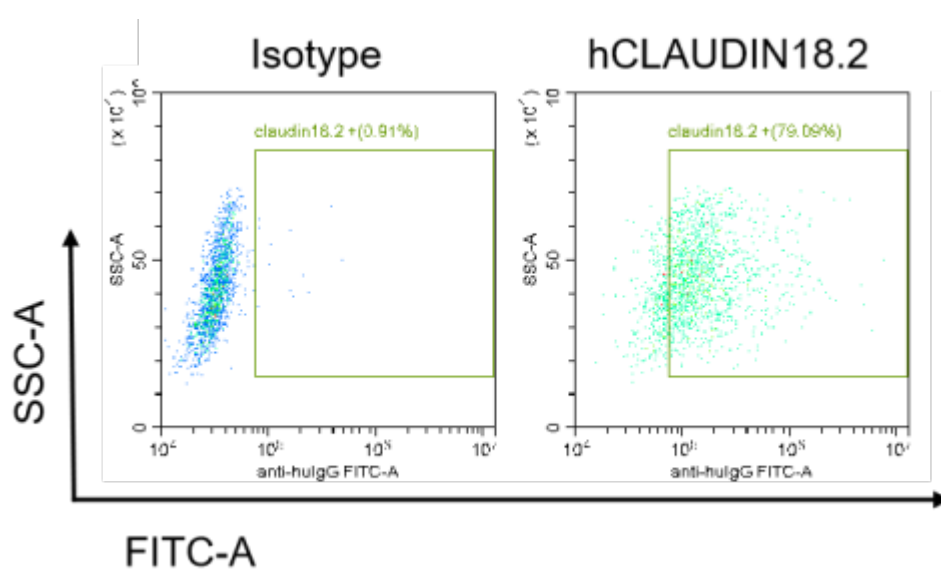


Figure 1. hCLAUDIN18.2 expression in MC38-hCLAUDIN18.2 cell line.

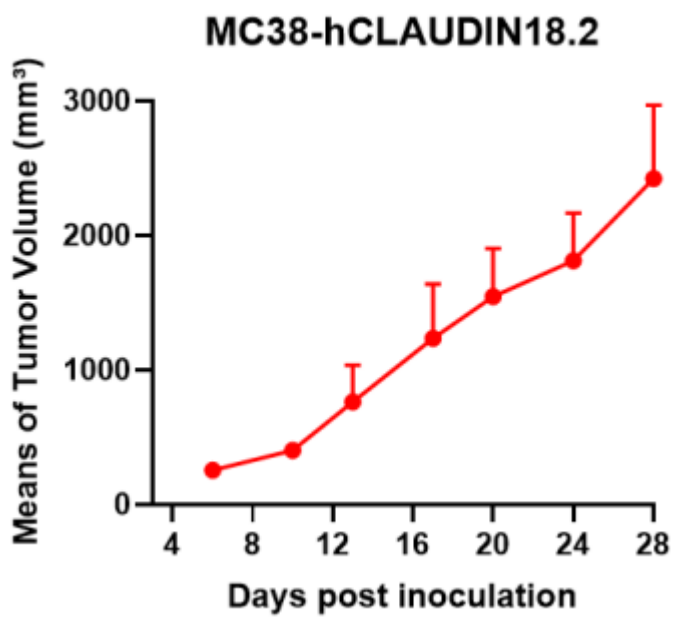


Figure 2. Tumor growth curve of MC38-hCLAUDIN18.2 allogeneic model (n=4).

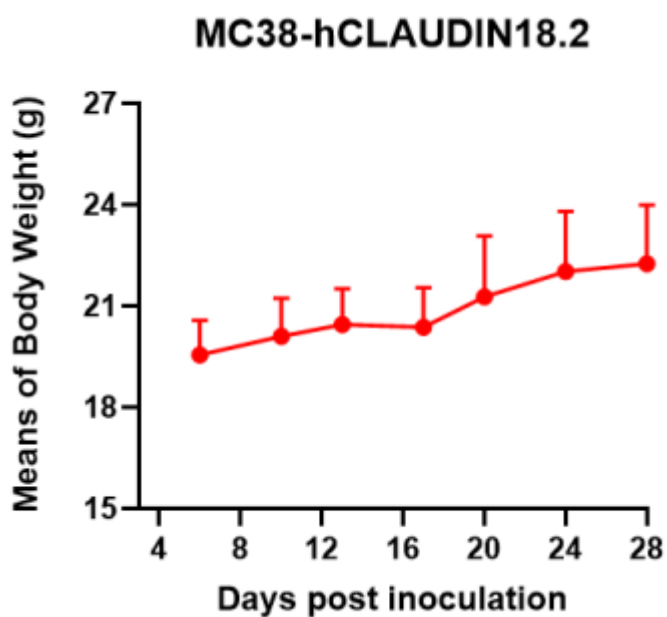


Figure 3. Body weight curve of MC38-hCLAUDIN18.2 allogeneic model (n=4).

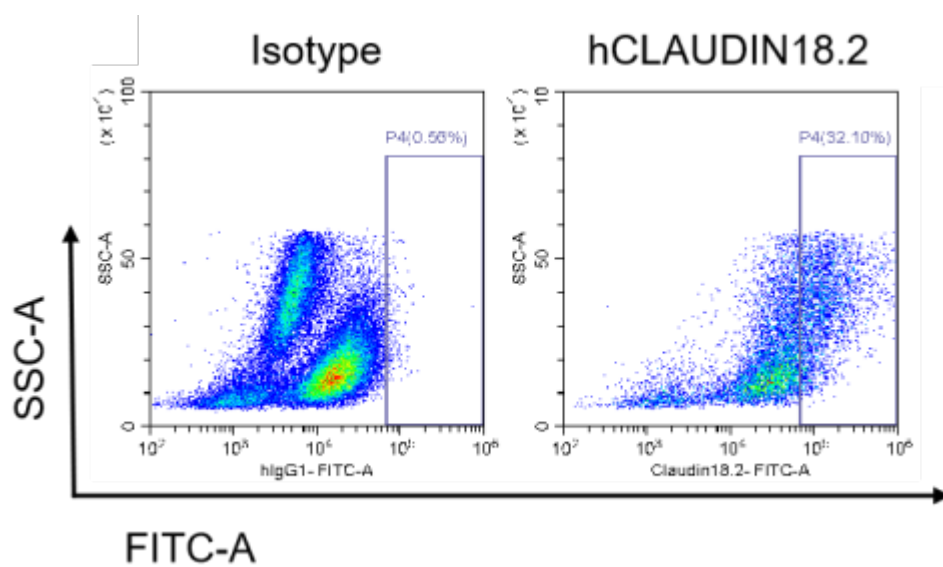


Figure 4. The expression of hCLAUDIN18.2 in humanized modified tumors by FACS.