

# MC38-hCD47/hPD-L1

## 品系基本信息

目录号 NM-S13-TM07

细胞系名称 MC38-*Cd274*<sup>em1(hPDL1)</sup> *Cd47*<sup>em1(hCD47)/Smoc</sup>

品系状态 体内药效验证完成

品系描述 PDL1和CD47基因人源化的MC38结肠癌细胞系。

\*使用本品系发表的文献需注明: MC38-hCD47/hPD-L1 cell line (Cat. NO. NM-S13-TM07) was purchased from Shanghai Model Organisms Center, Inc..

## 验证数据

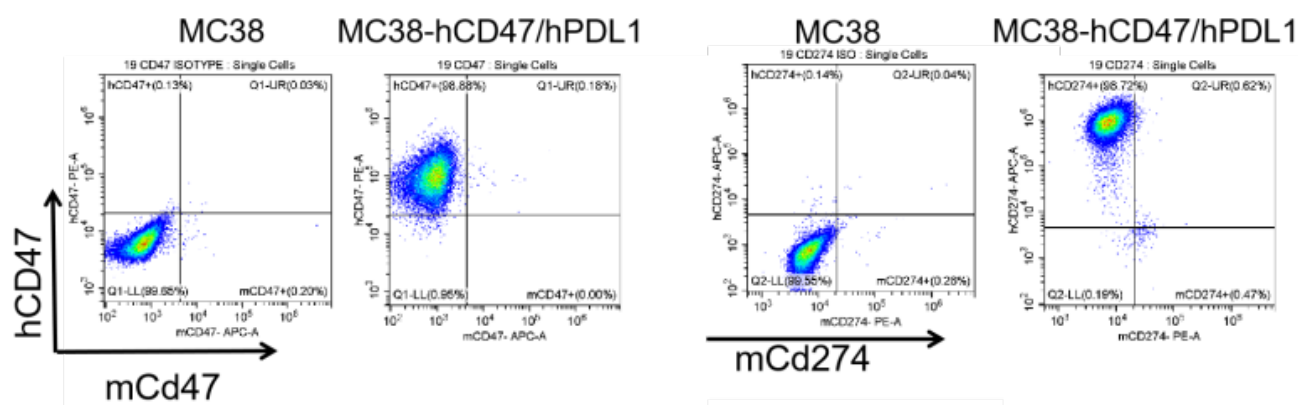


Figure 1. hCD47/hPDL1 expression in wild-type MC38 and MC38-hCD47/hPDL1 cell lines.

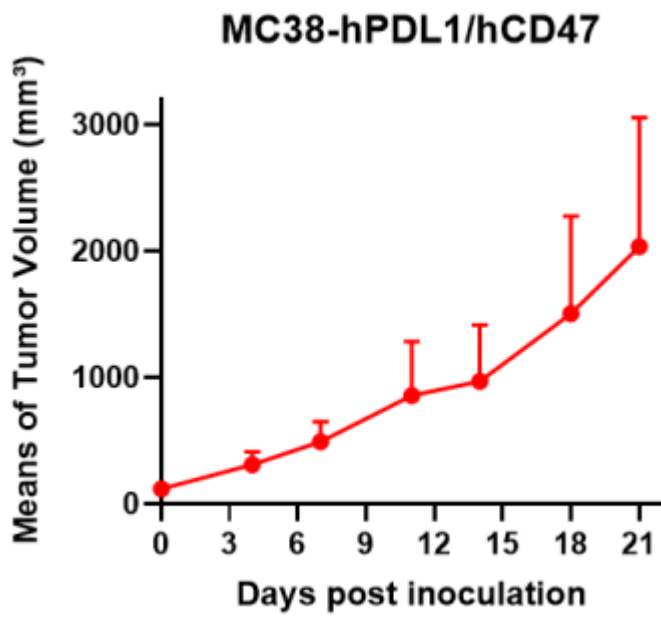


Figure 2. Tumor growth curve of MC38-hCD47/hPDL1 syngeneic model (n=4).

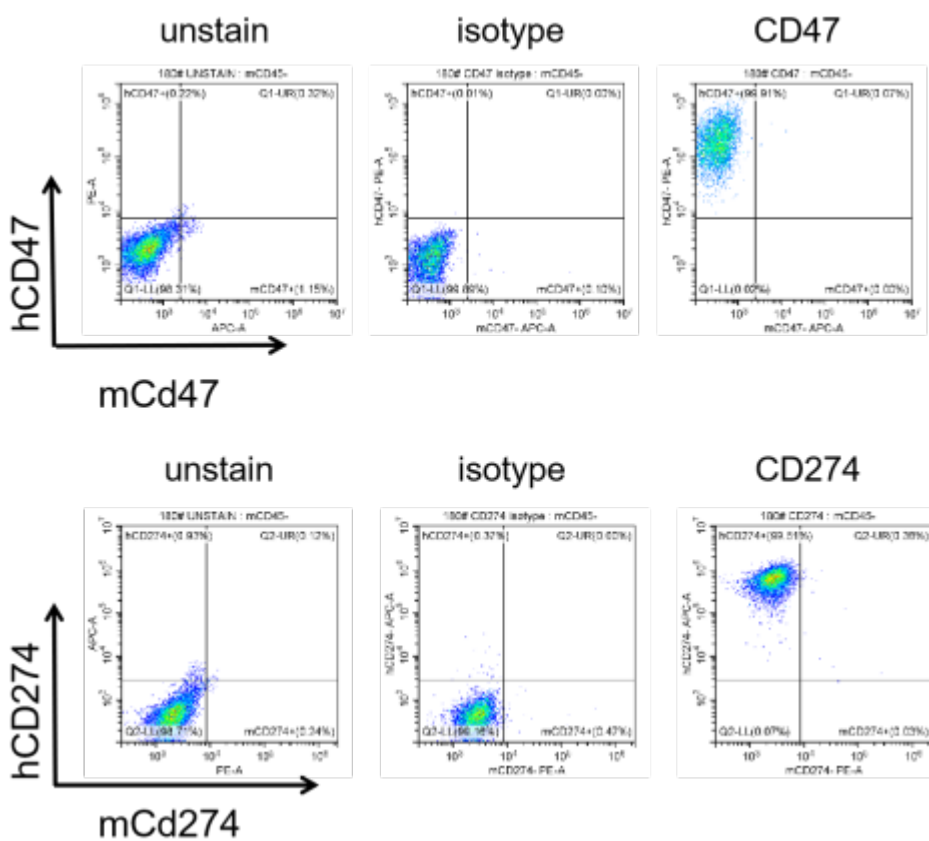


Figure 3. The expression of hCD47/hPDL1 in humanized modified tumors by FACS.

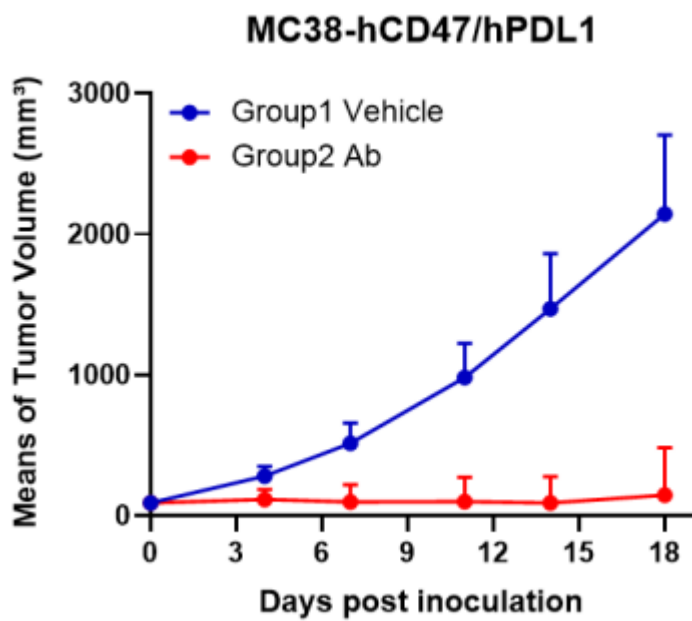


Figure 4. Antitumor activity of Bispecific-antibody in two different treatment group (n=6).