

hCCR8(BALB/c)(2)

品系全名	BALB/cAnSmoc- <i>Ccr8</i> ^{em(hCCR8)Smoc}
目录号	NM-HU-220501
品系状态	胚胎冻存

基因信息

基因名 CCR8	基因曾用名	Cmkbr8
	NCBI ID	12776
	MGI ID	1201402
	Ensembl ID	ENSMUSG00000042262
	人类同源基因	CCR8

品系描述

利用同源重组，将小鼠*Ccr8* 基因进行人源化修饰。

*使用本品系发表的文献需注明: hCCR8(BALB/c)(2) mice (Cat. NO. NM-HU-220501) were purchased from Shanghai Model Organisms Center, Inc..

验证数据

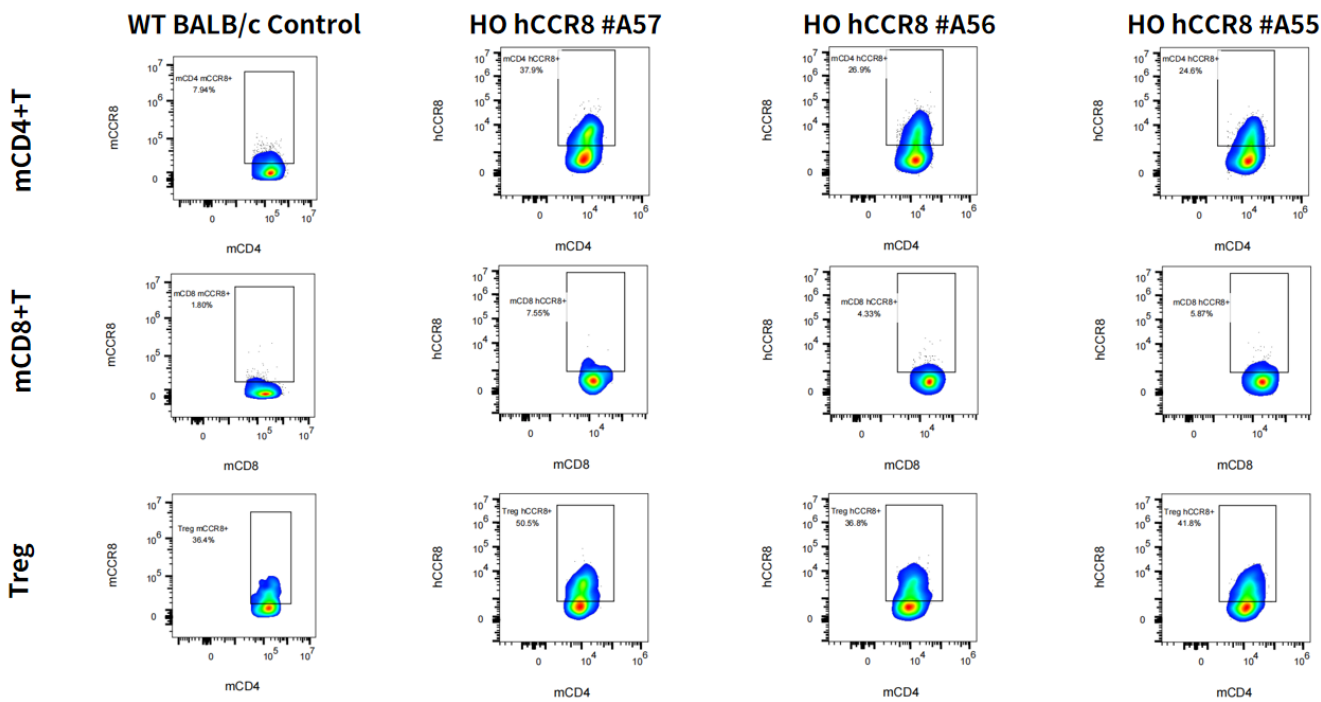


Fig1. Detection of hCCR8 expression on spleen-derived activated T cells and Tregs in hCCR8 KI mice.

*Splenocytes were activated by anti-mCD3/CD28 antibody *in vivo*.

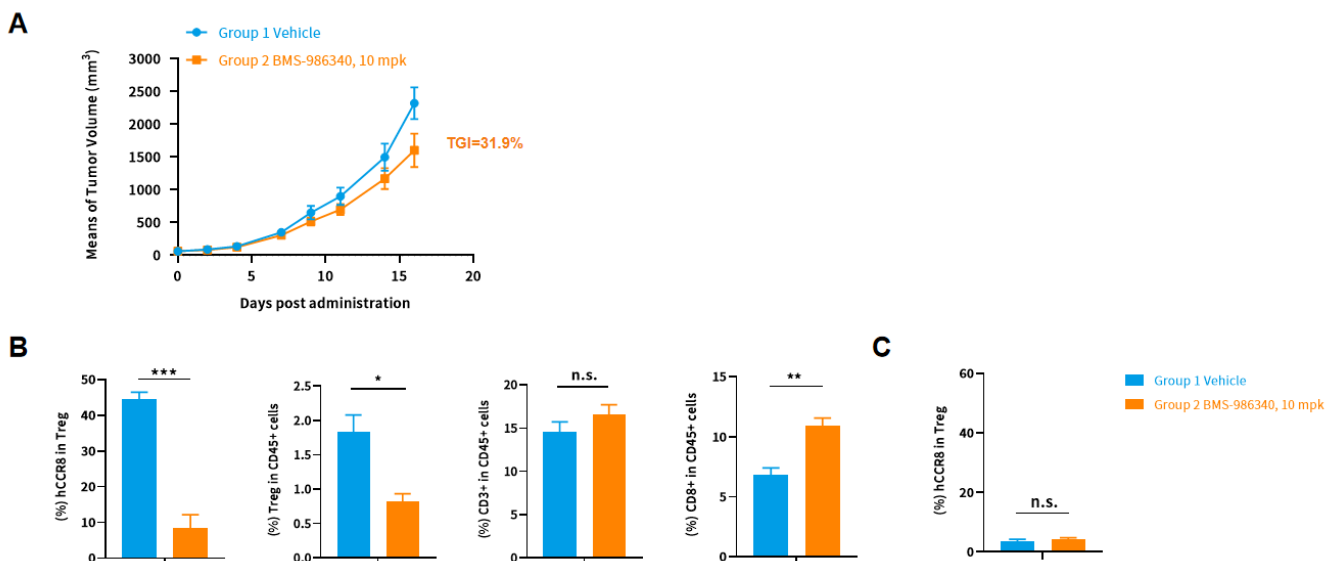


Fig2. *In vivo* antitumor responses of anti-hCCR8 alone in BALB/c hCCR8(v2) knockin mice engrafted with CT26 tumor.

(A) Mean tumor growth curves upon treatment; (B) *In vivo* antitumor response of anti-hCCR8 in hCCR8 (v2) mice bearing CT26 tumor; (C) Expression of hCCR8 in spleen in hCCR8 (v2) mice bearing CT26 tumor.

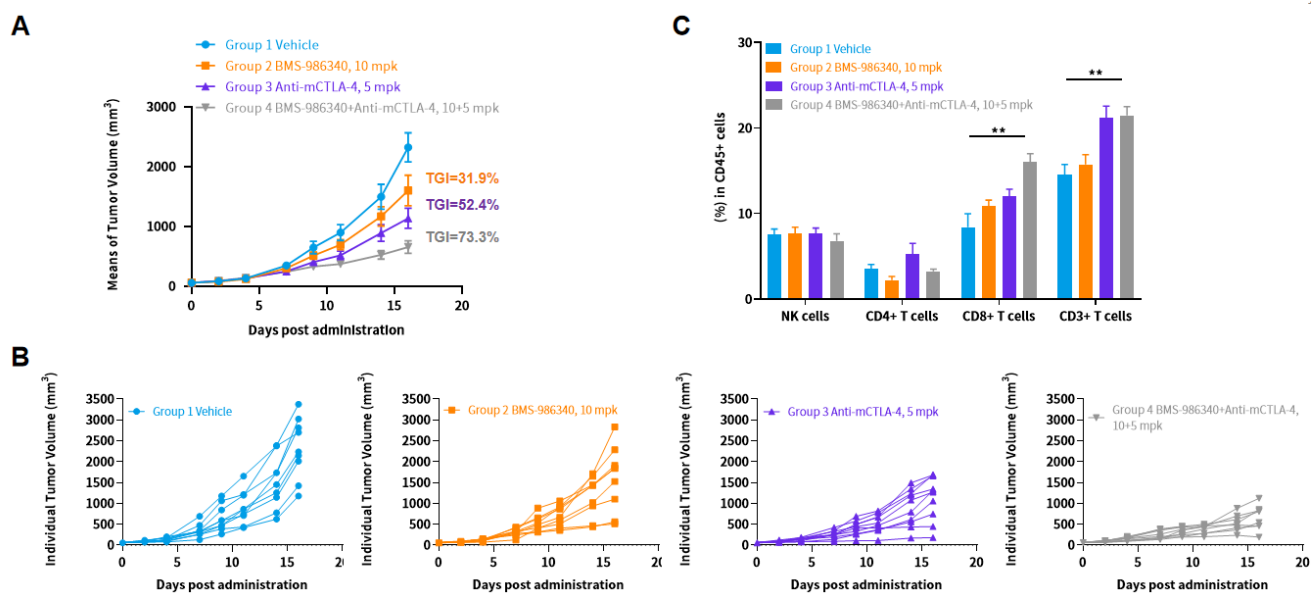


Fig3. *In vivo* antitumor responses of anti-hCCR8 alone or in combination with anti-CTLA-4 in BALB/c hCCR8(v2) knockin mice engrafted with CT26 tumor.

(A) Mean tumor growth curves upon treatment; (B) Individual tumor growth curves upon treatment; (C) In vivo antitumor response of anti-hCCR8 in hCCR8 (v2) mice bearing CT26 tumor.