

# A20-H11-hCD20-Luc

## 品系基本信息

目录号	NMC-230031
细胞系名称	A20- <i>Igs2</i> <sup>em1(hCD20-Luc)Smoc</sup>
品系状态	成瘤性验证完成
品系描述	CD20基因人源化的A20 B细胞淋巴瘤细胞系 *使用本品系发表的文献需注明: A20-H11-hCD20-Luc cell line (Cat. NO. NMC-230031) was purchased from Shanghai Model Organisms Center, Inc..

## 验证数据

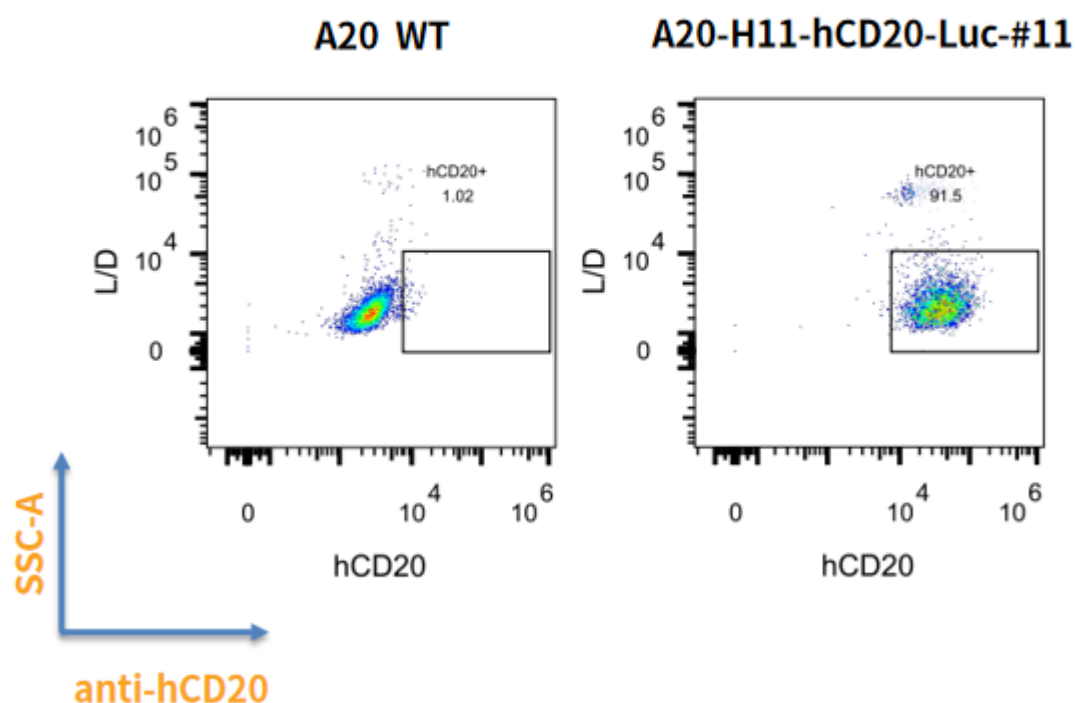


Fig1.hCD20 expression on in vitro cultured cells of □A20-H11-hCD20-Luc

- BALB/c mice were inoculated with A20-H11-hCD20-Luc subcutaneously at  $2.5 \times 10^6$  cells/mouse inoculum for tumor development.

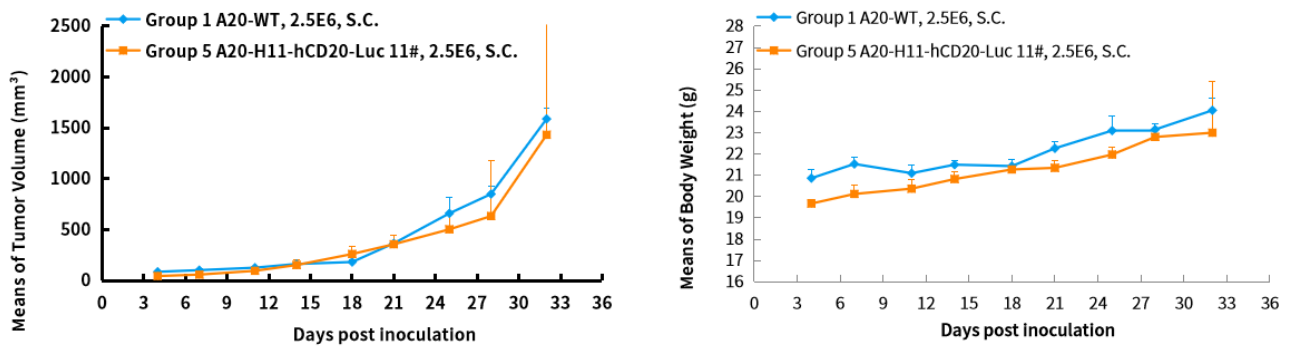


Fig2. In vivo validation of A20-H11-hCD20-Luc in BALB/c mice

- The tumors were collected at day 27 post tumor cell inoculation.

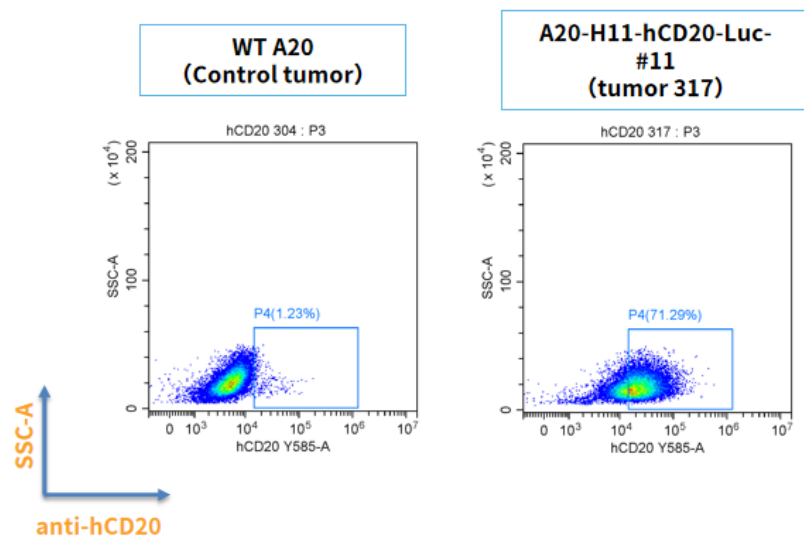


Fig3. hCD20 expression in tumors after in vivo growth of A20-H11-hCD20-Luc in wild type BALB/c mice