

RM1-hPSMA

品系基本信息

目录号 NM-QL01-TM1

细胞系名称 RM1-Tg(hPSMA)Smoc

品系状态 成瘤性验证完成

品系描述 PSMA基因人源化的RM1小鼠前列腺癌细胞

*使用本品系发表的文献需注明: RM1-hPSMA cell line (Cat. NO. NM-QL01-TM1) was purchased from Shanghai Model Organisms Center, Inc..

验证数据

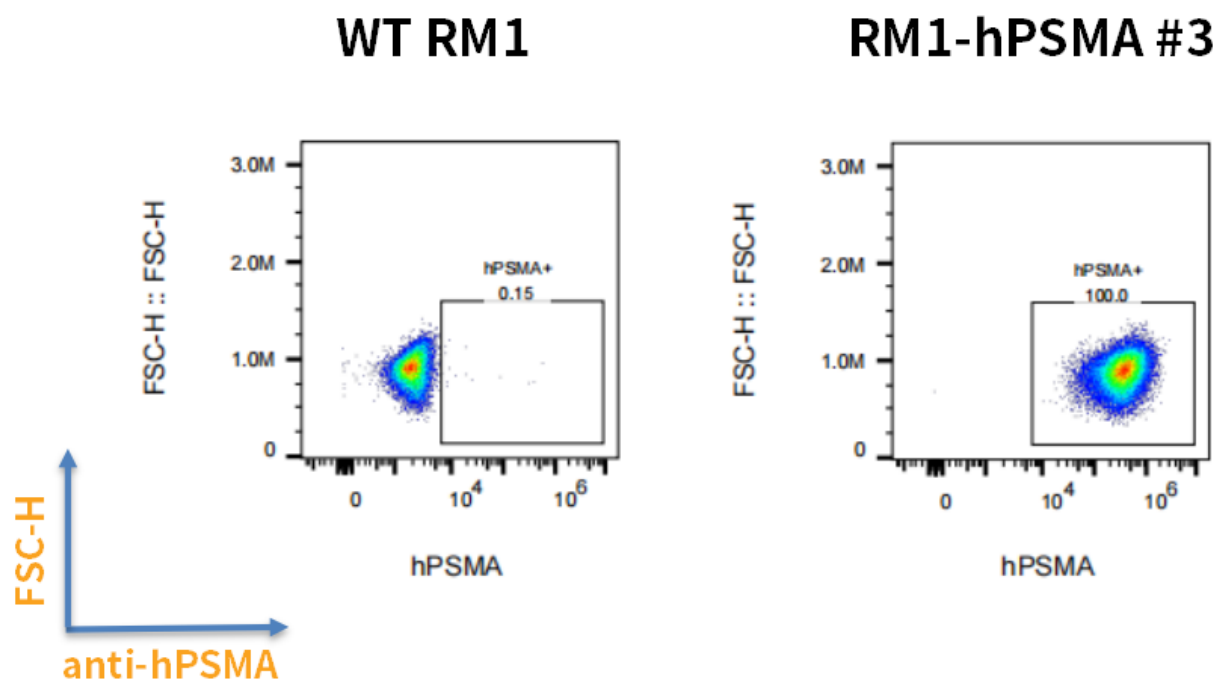


Fig1. Detection of hPSMA expression in RM1-hPSMA cells *in vitro* .

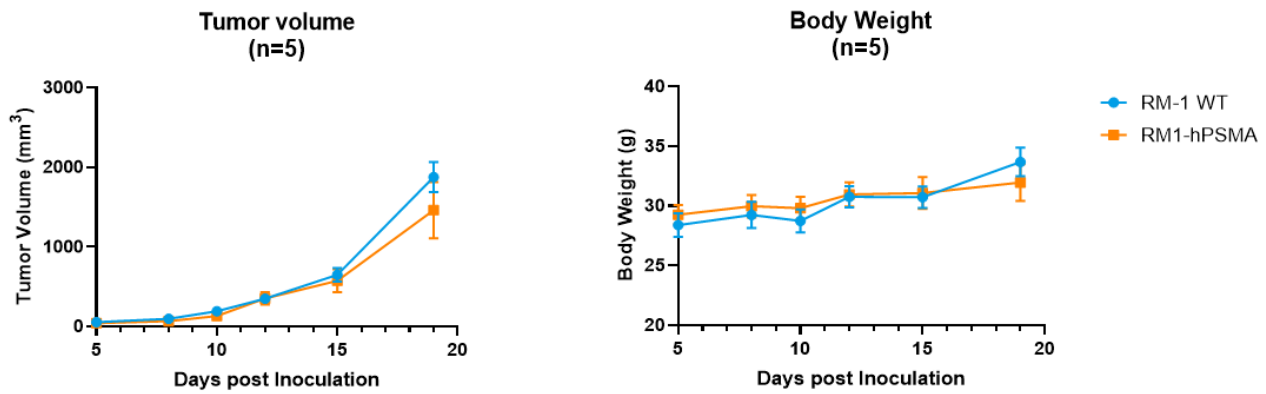


Fig2. *In vivo* tumor growth curves of RM1-hPSMA cells in hPSMA mice.

Het male hPSMA mice were inoculated with RM1-hPSMA subcutaneously at 2×10^6 cells/mouse inoculum for tumor development.

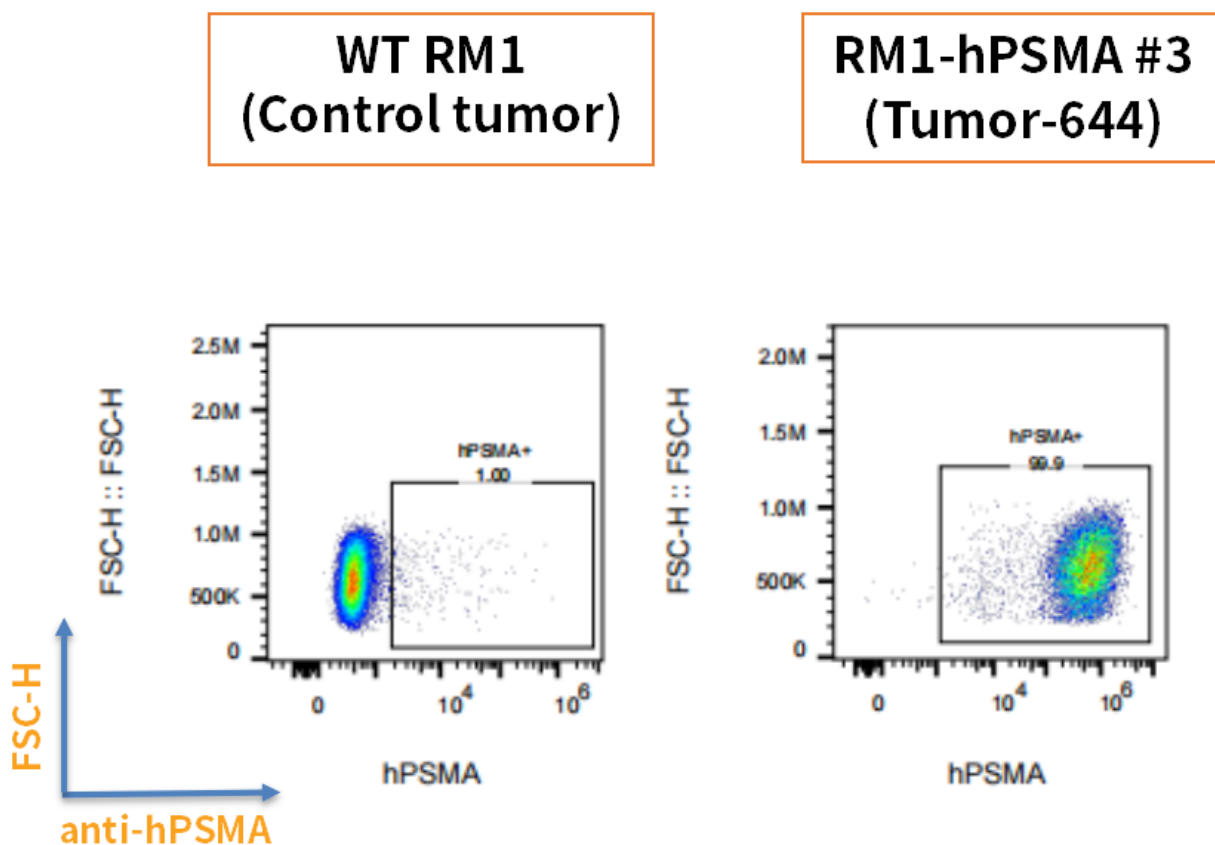


Fig3. Detection of hPSMA expression on tumor cells in subcutaneous xenograft model of RM1-hPSMA cells (The tumors were collected at day 15 post tumor cell inoculation).