

Col1a1-IRES-CreERT2

| | |
|------|---|
| 品系全名 | C57BL/6Smoc- <i>Col1a1</i> ^{em(IRES-CreERT2)1Smoc} |
| 目录号 | NM-KI-225031 |
| 品系状态 | 活体 |

基因信息

| | | |
|---------------|------------|--|
| 基因名 Col1a1 | 基因曾用名 | Cola1; Mov13; Cola-1; Mov-13; Col1a-1 |
| | NCBI ID | 12842 |
| | MGI ID | 88467 |
| | Ensembl ID | ENSMUSG00000001506 |
| | 人类同源基因 | COL1A1 |

品系描述

将IRES-CreERT2插入到小鼠Col1a1基因终止密码子处。**CreERT2有泄露情况，请根据研究目的使用该品系。**

应用领域： Cre工具鼠，成骨细胞

*使用本品系发表的文献需注明: Col1a1-IRES-CreERT2 mice (Cat. NO. NM-KI-225031) were purchased from Shanghai Model Organisms Center, Inc..

验证数据

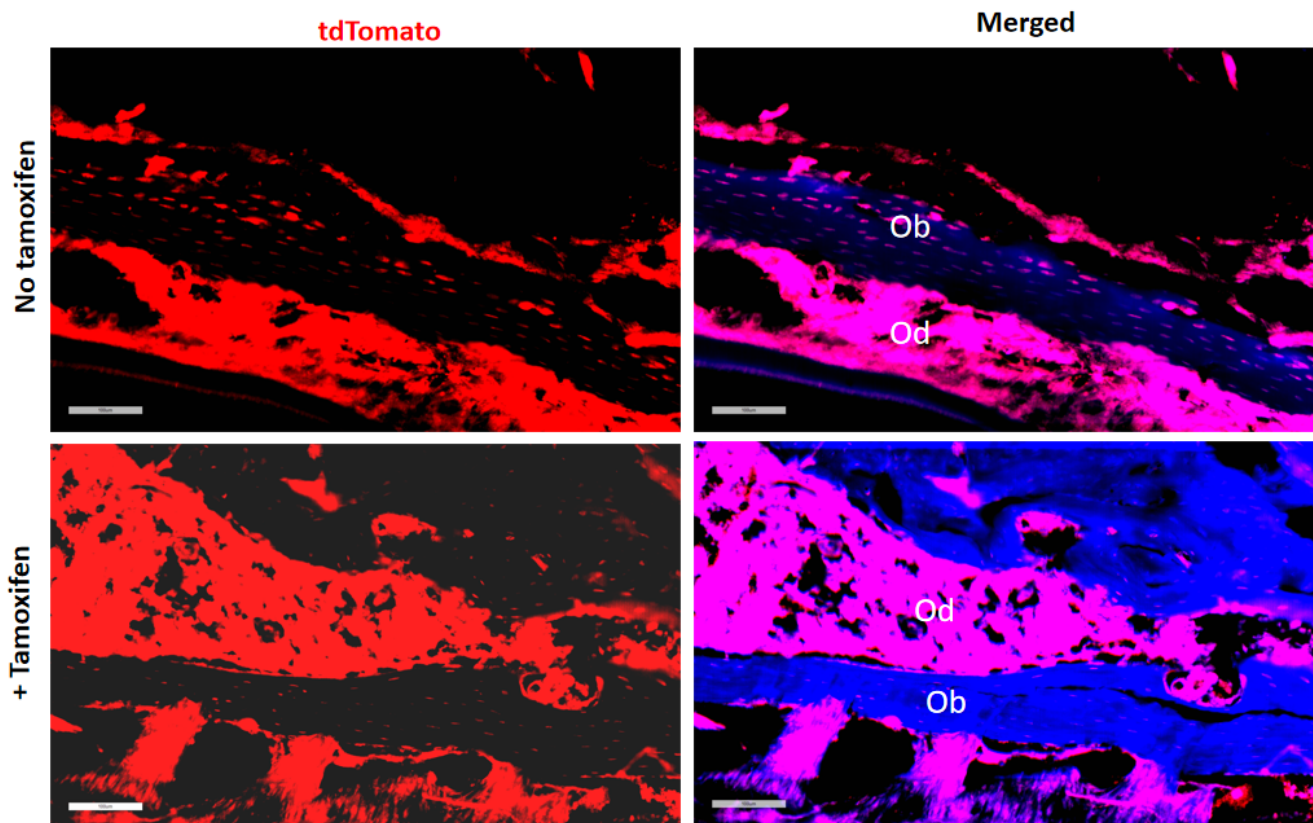


Fig1. Cre mediated recombination in thyroid of $Col1a1^{CreERT2/+};Rosa26^{tdTomato/+}$ mouse.

Ob, osteoblasts; Od, odontoblasts

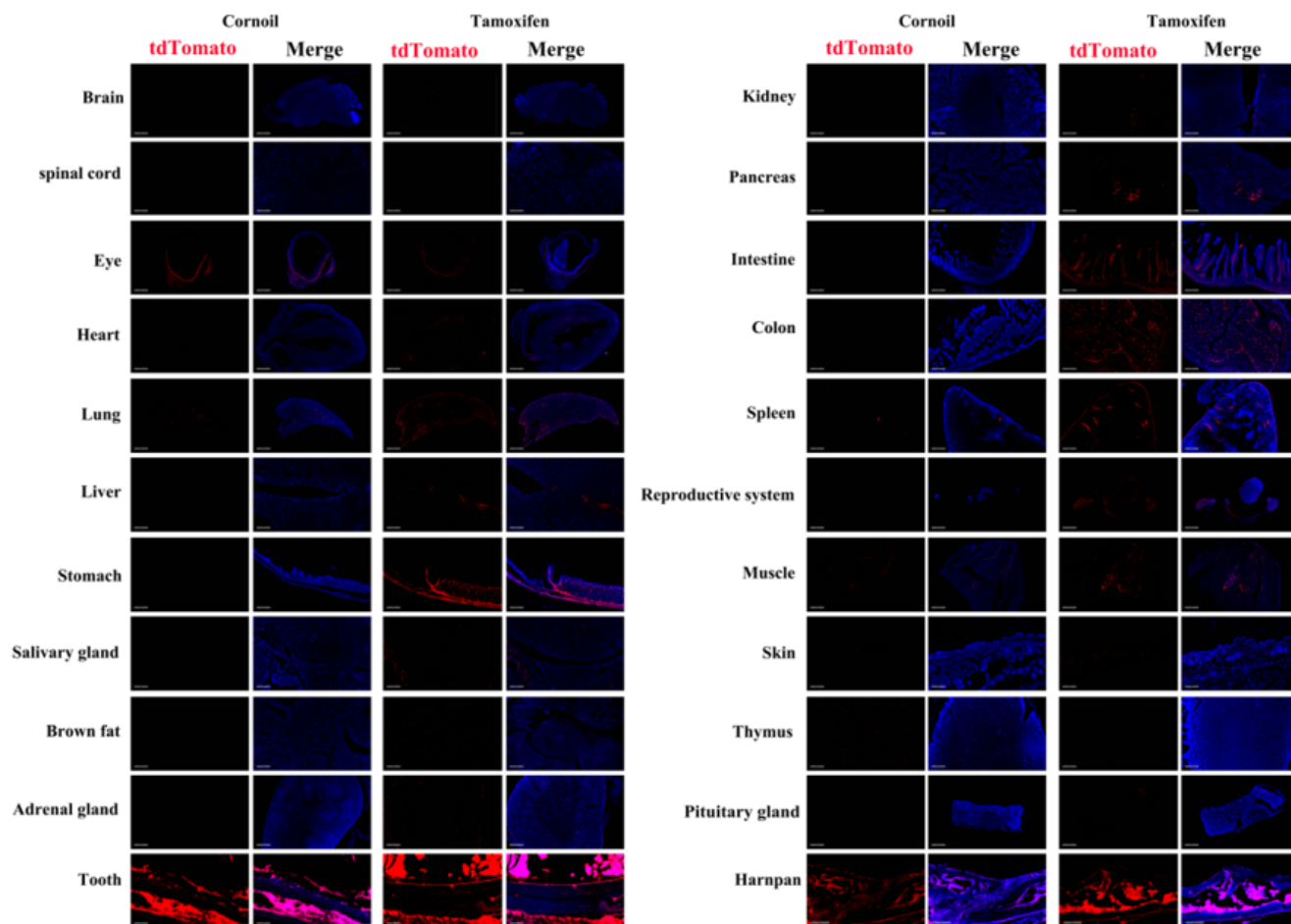


Fig2. Detection of tdTomato(red) in various tissues of Col1a1^{CreERT2/+};Rosa26^{tdTomato/+} mouse.

Expression tissues include: lung, stomach, teeth, pancreas, small intestine, colon, spleen, epididymis, skin, pituitary gland and skull. A few cells expressed in brain, eyeball, heart, liver, salivary gland, adrenal gland, kidney, muscle, thymus. Tissues that unexpressed include spinal cord, brown fat. The control group is expressed before induction. (39-days old, male) (For more detailed information please contact our technical advisor.)
