

LLC,LL/2(LLC1)

品系基本信息

目录号	NM-S30A
细胞系名称	LLC,LL/2(LLC1)
品系状态	成瘤性验证完成
品系描述	<p>LLC (LLC1, LL/2) 是来源于小鼠的 Lewis 肺癌细胞系，在 C57BL/6 小鼠皮下接种后，能正常成瘤。</p> <p>*使用本品系发表的文献需注明: LLC,LL/2(LLC1) cell line (Cat. NO. NM-S30A) was purchased from Shanghai Model Organisms Center, Inc..</p>

验证数据

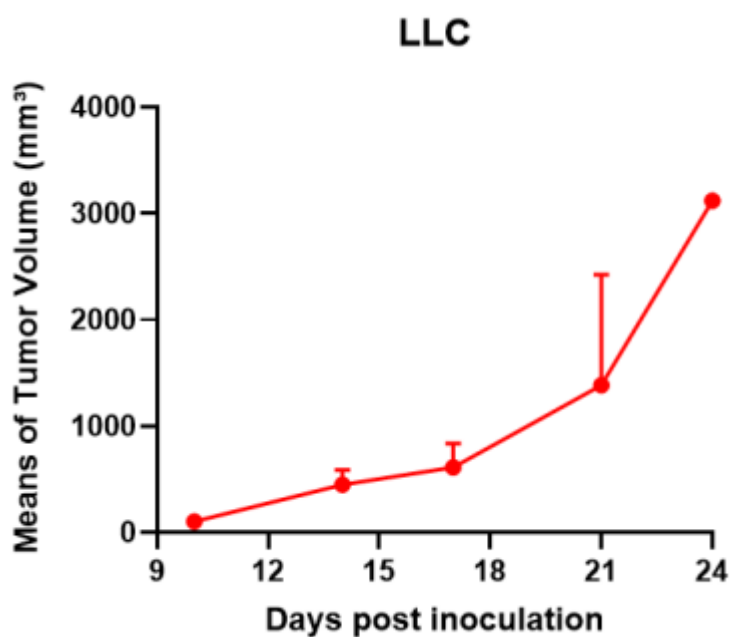


Figure 2. Tumor growth curve of LLC1 allogeneic model (n=4)

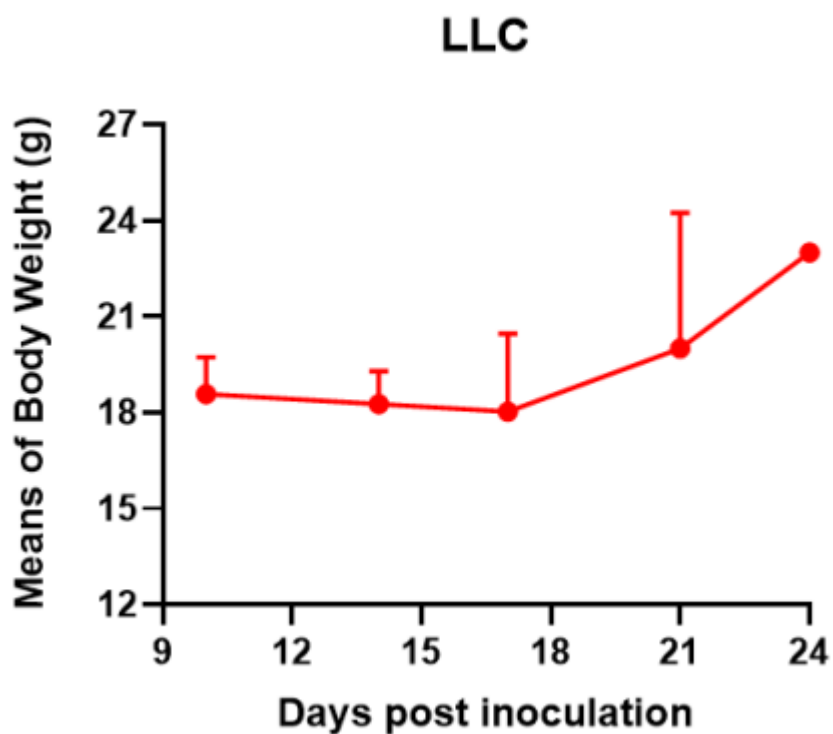


Figure 3. Body weight change of LLC1 allogeneic model (n=4)

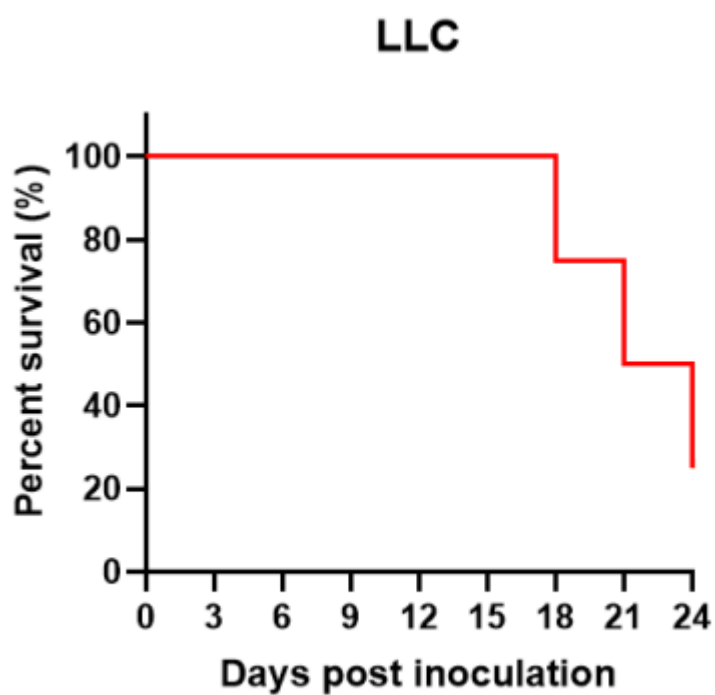


Figure 4. Survival curve of LLC1 allogeneic model (n=4)

野生型细胞株不进行出售服务，仅作为荷瘤鼠和体内药效进行服务

