

# HO-8910PM

## 品系基本信息

目录号	NM-RC01
细胞系名称	HO-8910PM
品系状态	成瘤性验证中
品系描述	人高转移卵巢癌细胞

\*使用本品系发表的文献需注明: HO-8910PM cell line (Cat. NO. NM-RC01) was purchased from Shanghai Model Organisms Center, Inc..

## 验证数据

The HO-8910PM cell line was derived human ovarian cancer cells.

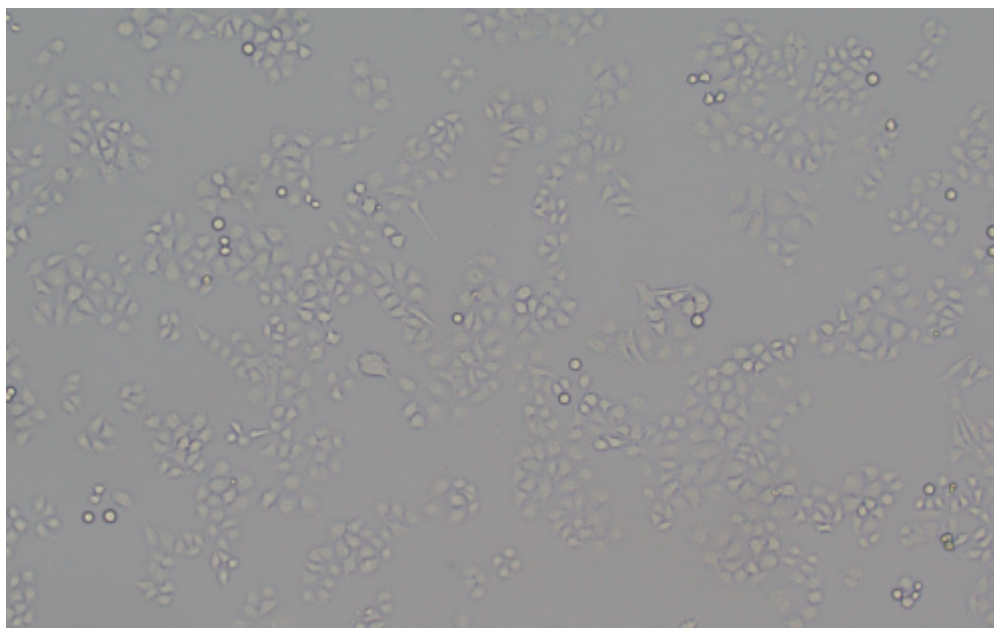


Figure 1. Morphology of HO-8910PM cell line

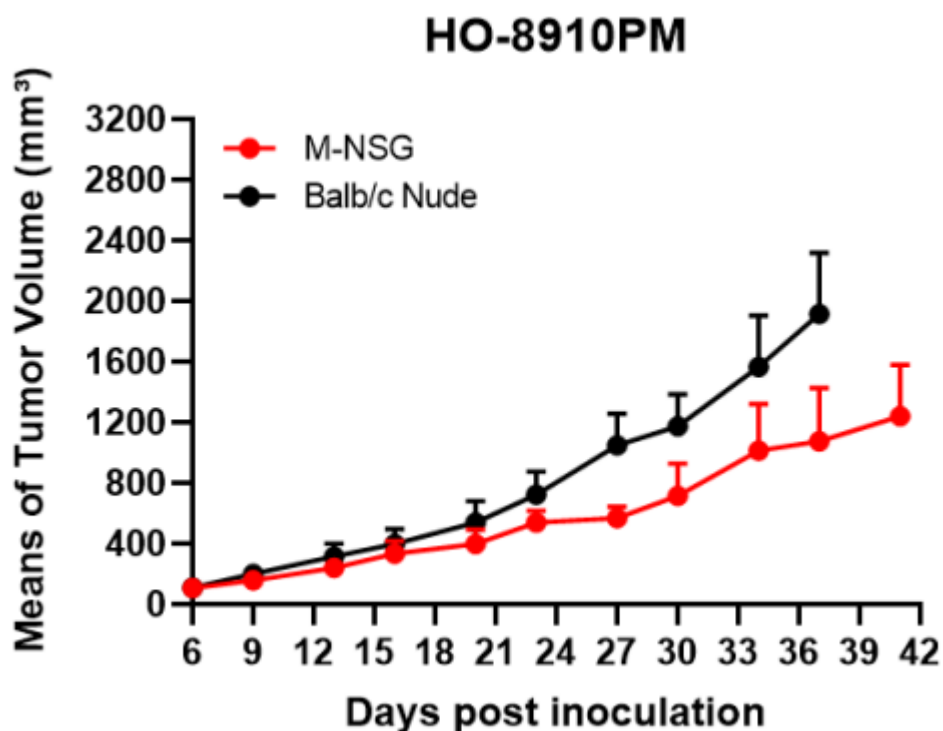


Figure 2. Tumor growth curve of HO-8910PM xenograft model (n=5)

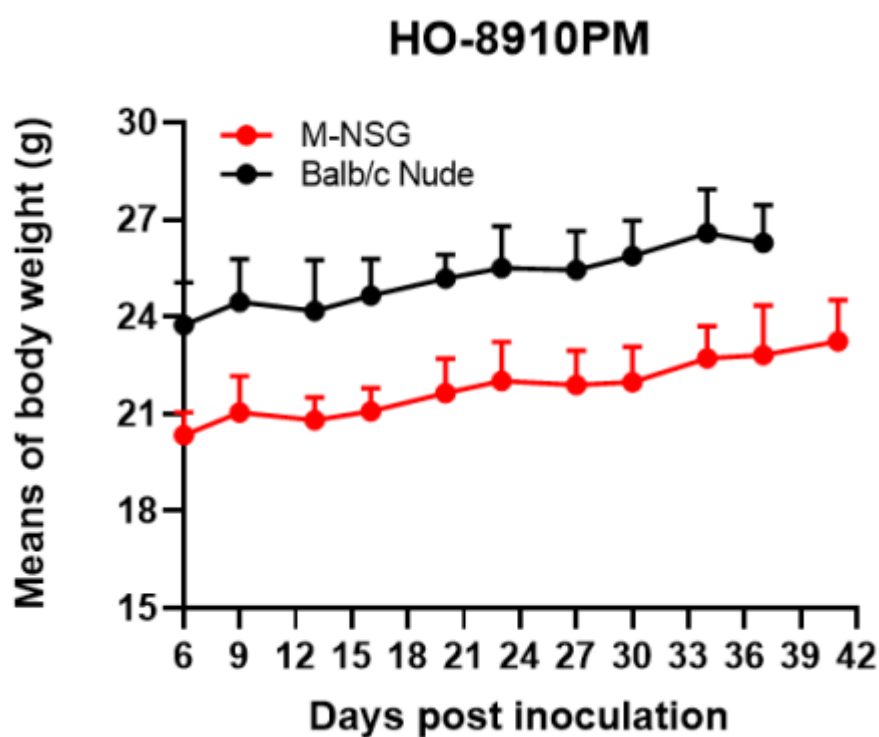


Figure 3. Body weight change of HO-8910PM xenograft model (n=4)

野生型细胞株不进行出售服务，仅作为荷瘤鼠和体内药效进行服务。

