

NCI-H1650

品系基本信息

目录号	NM-F09
细胞系名称	NCI-H1650
品系状态	成瘤性验证完成
品系描述	NCI-H1650 is a cell line exhibiting epithelial morphology that was isolated in 1987 from the lung tissue of a 27-year-old, male smoker with stage 3B, bronchoalveolar carcinoma.
	*使用本品系发表的文献需注明: NCI-H1650 cell line (Cat. NO. NM-F09) was purchased from Shanghai Model Organisms Center, Inc..

验证数据

I. Characterization of in vivo growth kinetics

The NCI-H1650 cells were subcutaneously inoculated into the M-NSG mice.

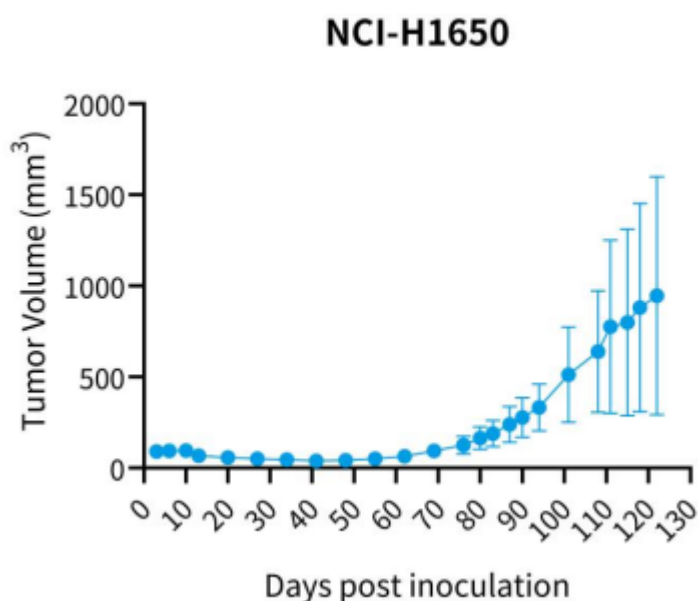


Figure 1. Tumor growth curve of NCI-H1650 xenograft model (n=12)

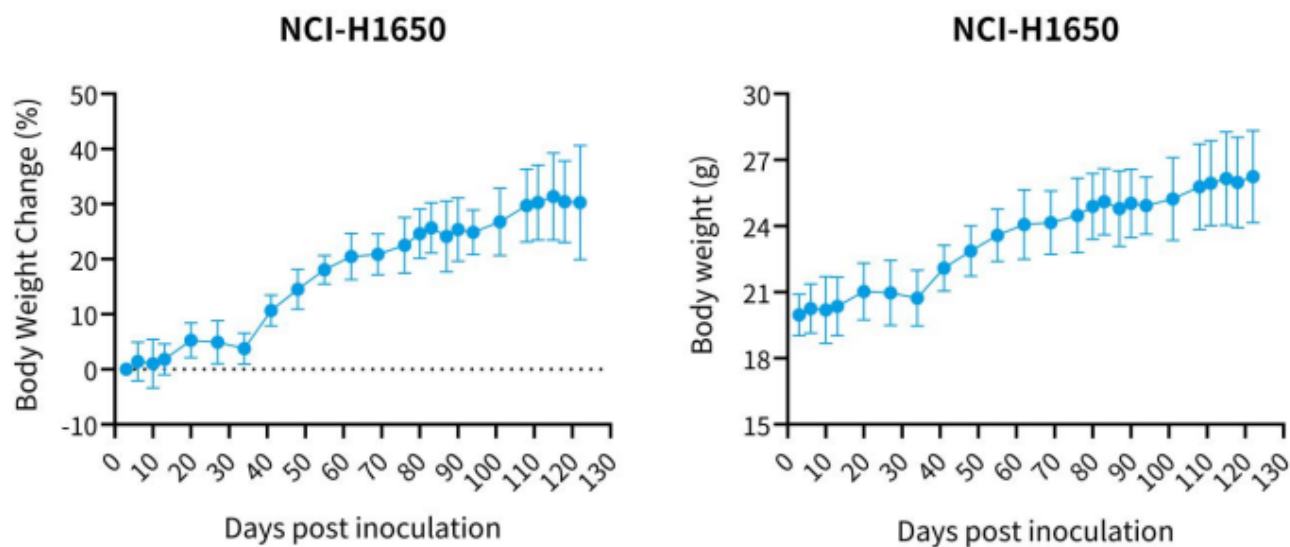


Figure 2. Body weight change of NCI-H1650 xenograft model (n=12)

Survival

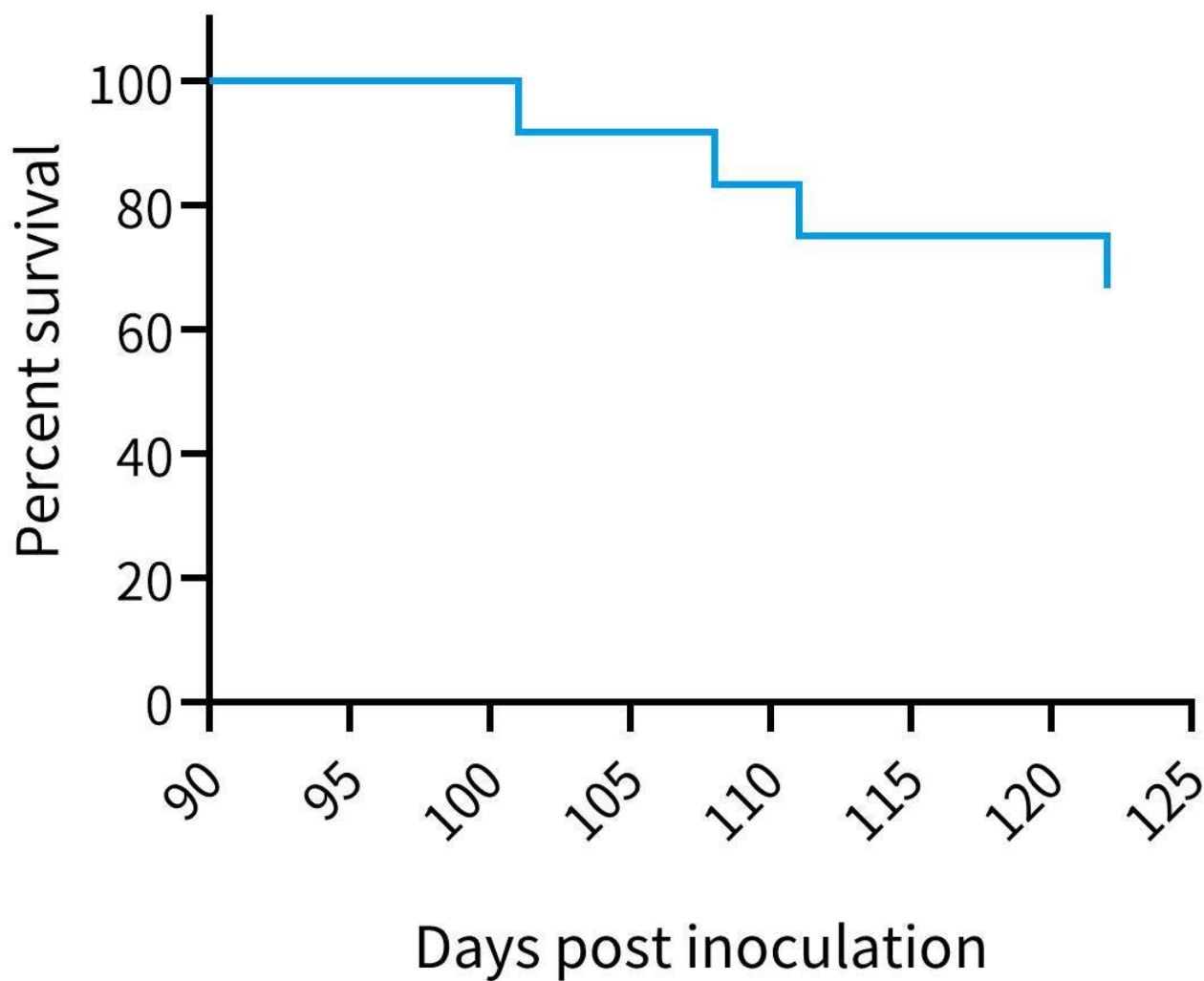


Figure 3. Survival curve of NCI-H1650 xenograft model (n=12)

野生型细胞株不进行出售服务，仅作为荷瘤鼠和体内药效进行服务。