

# 4T1-hCD24

## 品系基本信息

目录号 NM-S07-TM03

细胞系名称 4T1-*Cd24*<sup>tm(hCD24)Smoc</sup>

品系状态 成瘤性验证完成

品系描述 CD24基因人源化的4T1小鼠乳腺癌细胞系

\*使用本品系发表的文献需注明: 4T1-hCD24 cell line (Cat. NO. NM-S07-TM03) was purchased from Shanghai Model Organisms Center, Inc..

## 验证数据

### 1. In vitro Expression of 4T1-hCD24 cell line

The hCD24 protein expression in the 4T1-hCD24 cells were measured by Flow Cytometry. FACS data showed that significant human CD24 expression in the 4T1-hCD24 cell line.

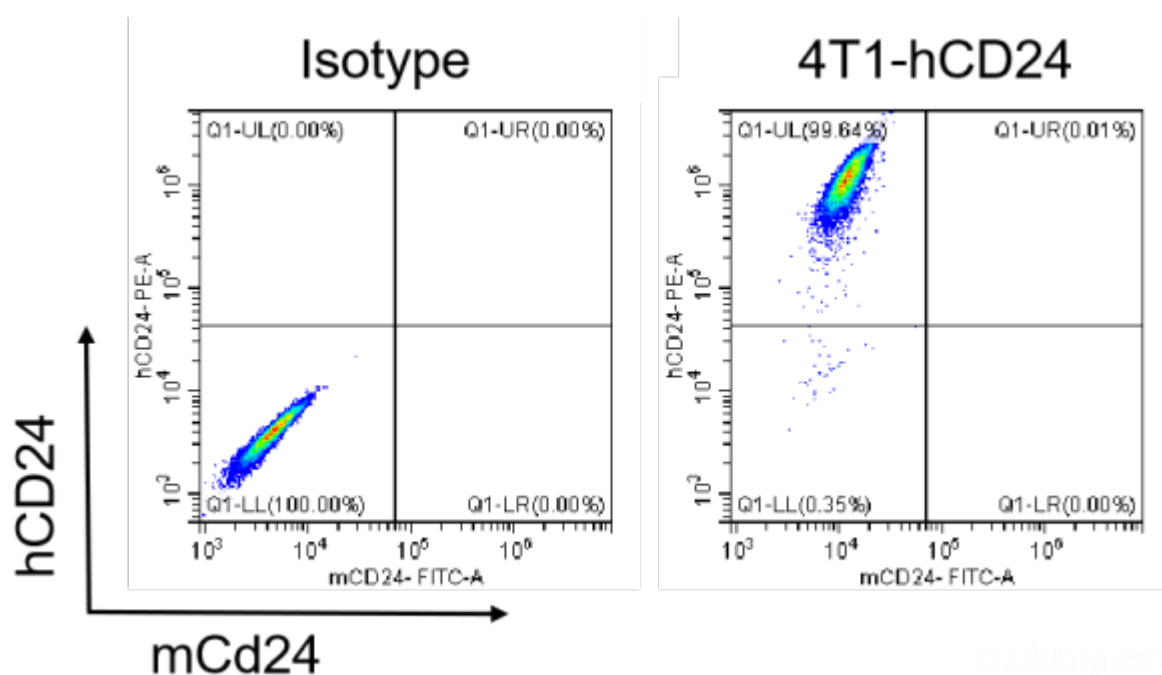


Figure 1. hCD24 expression in 4T1-hCD24 cell line

## 2. Characterization of in vivo growth kinetics

To test the take rates, and the tumor growth characteristics of 4T1-hCD24 cell line, cells were subcutaneously inoculated into the Balb/c mice. The tumor growth curve was shown in the Fig 2.

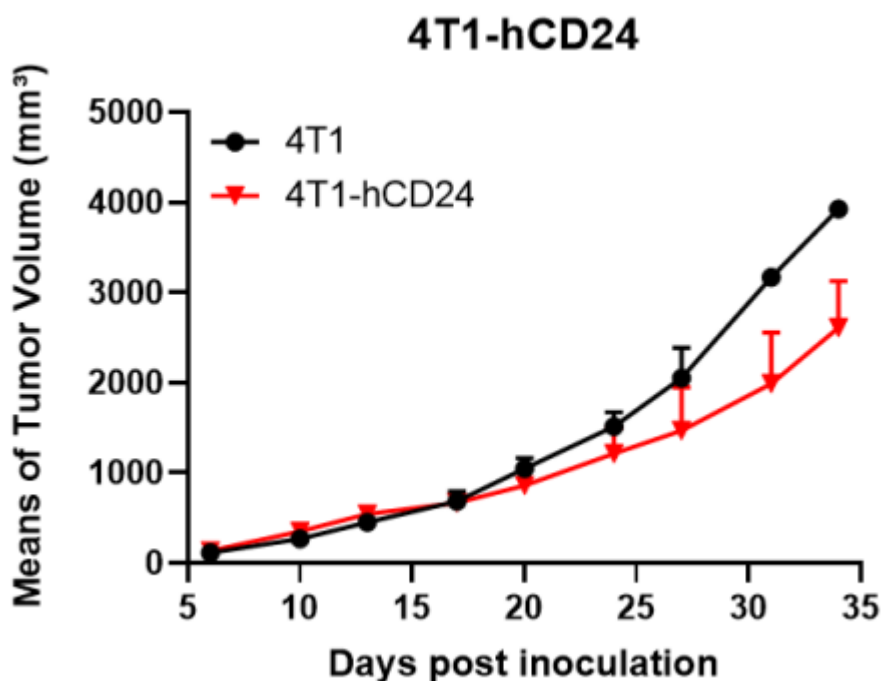


Figure 2. Tumor growth curve of 4T1-hCD24 syngeneic model (n=4)

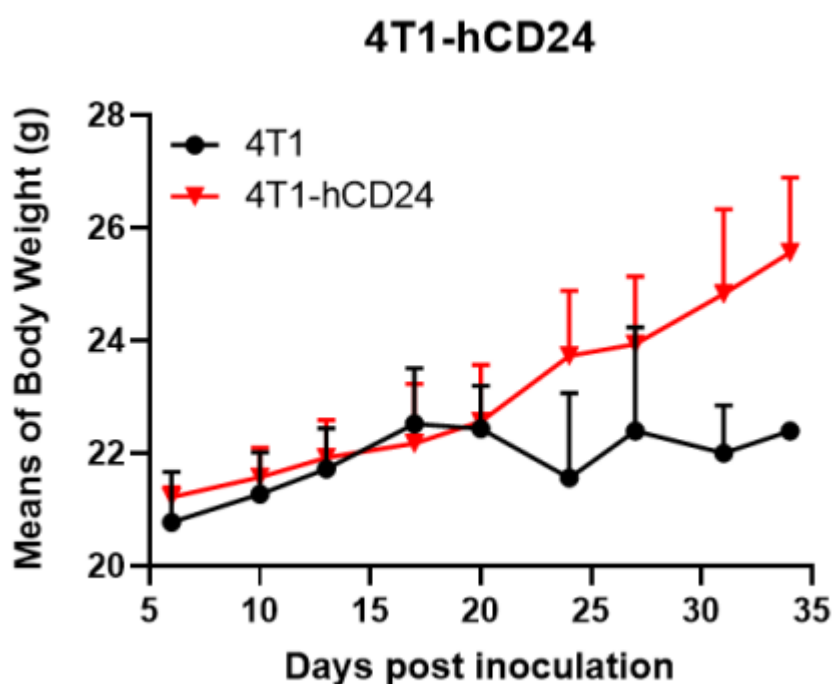


Figure 3. Body weight change of 4T1-hCD24 syngeneic model (n=4)

### 3. Expression of hCD24 protein in tumors

To verify the hCD24 protein expression, the tumors were dissected and separated for single cell suspension. Robust human CD24 protein expression can be detected in the humanized modified tumors.

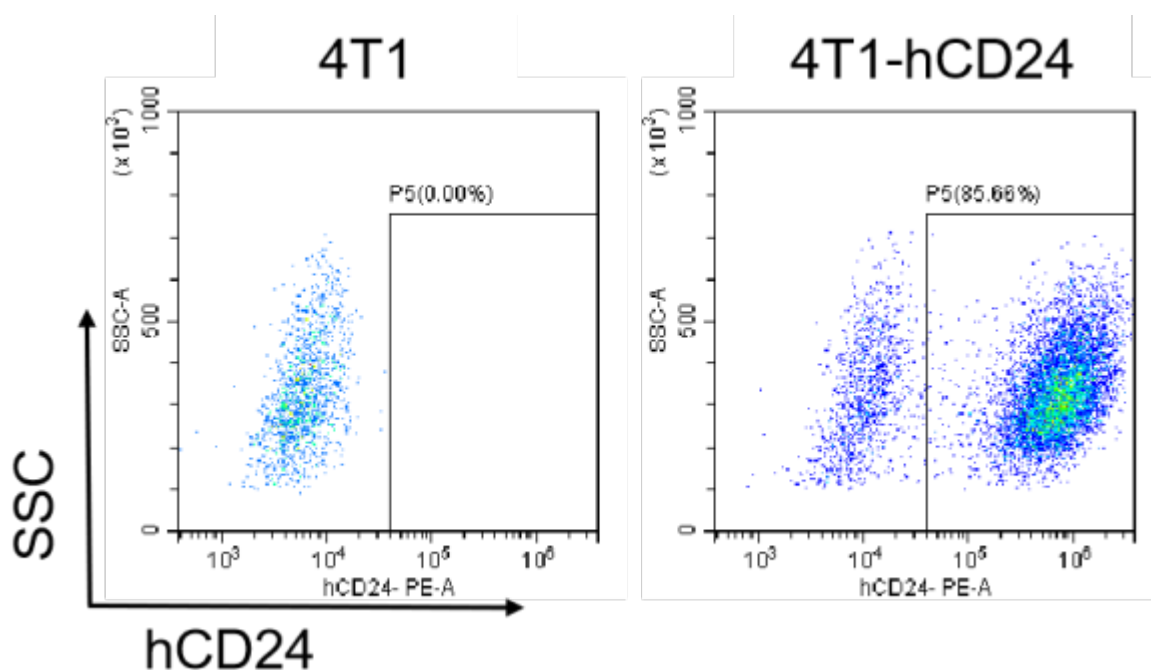


Figure 4. The expression of hCD24 in humanized modified tumors by FACS

发表文献