

# Siglec1-Cre

品系全名	C57BL/6Smoc- <i>Siglec1</i> <sup>em1(iCre-polyA)Smoc</sup>
目录号	NM-KI-215032
品系状态	活体

## 基因信息

基因名 Avil	基因曾用名	DOC6; Advil
	NCBI ID	<a href="#">11567</a>
	MGI ID	<a href="#">1333798</a>
	Ensembl ID	<a href="#">ENSMUSG00000025432</a>
	人类同源基因	AVIL

## 品系描述

将iCre-polyA插入到小鼠Siglec1基因起始密码子处。

\*使用本品系发表的文献需注明: Siglec1-Cre mice (Cat. NO. NM-KI-215032) were purchased from Shanghai Model Organisms Center, Inc..

## 验证数据

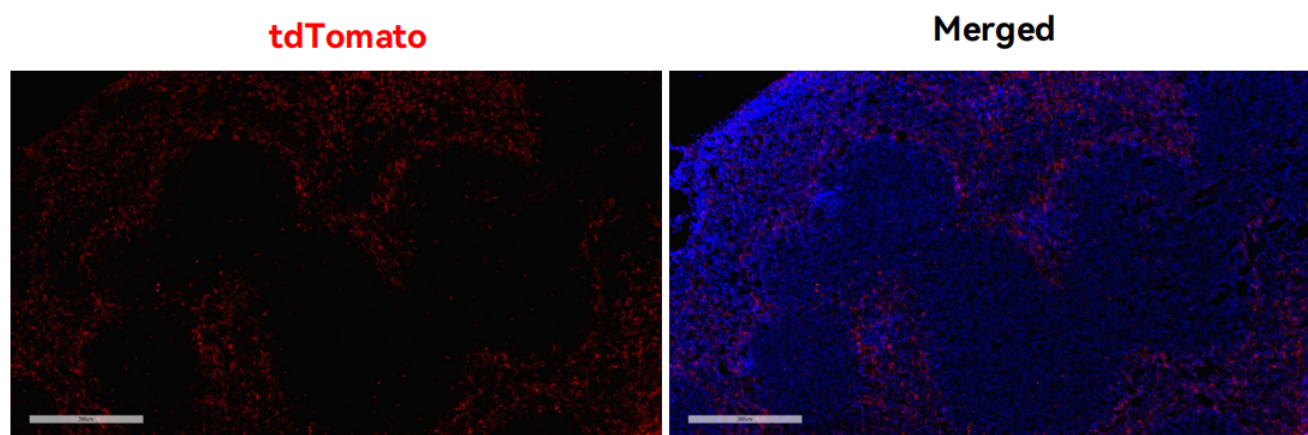


Fig1. Cre-mediated recombination in spleen of Siglec1<sup>Cre/+</sup>; Rosa26<sup>tdTomato/+</sup> mouse.

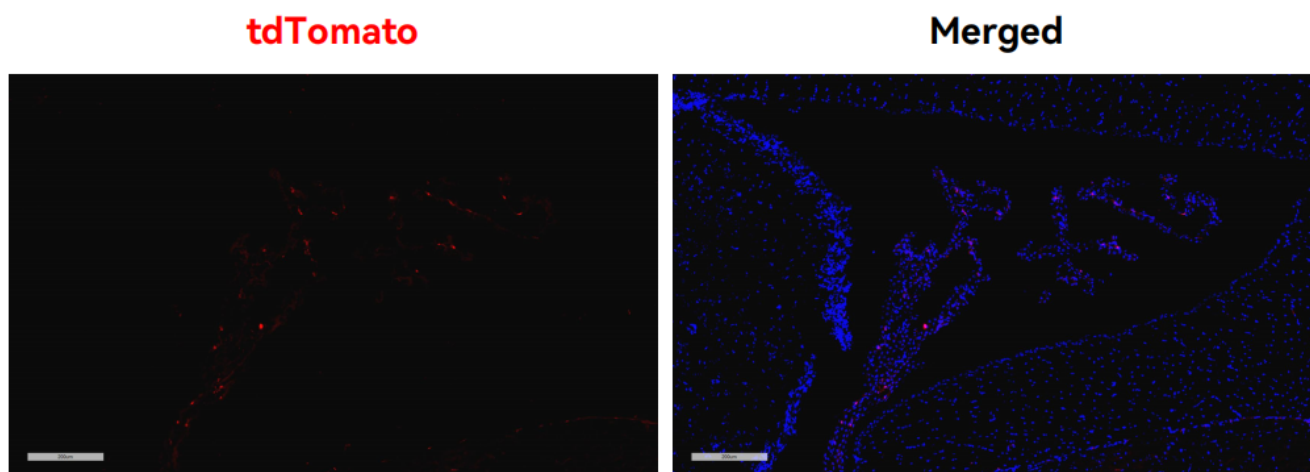


Fig2. Cre-mediated recombination in choroid plexus of *Siglec1<sup>Cre/+</sup>; Rosa26<sup>tdTomato/+</sup>* mouse.

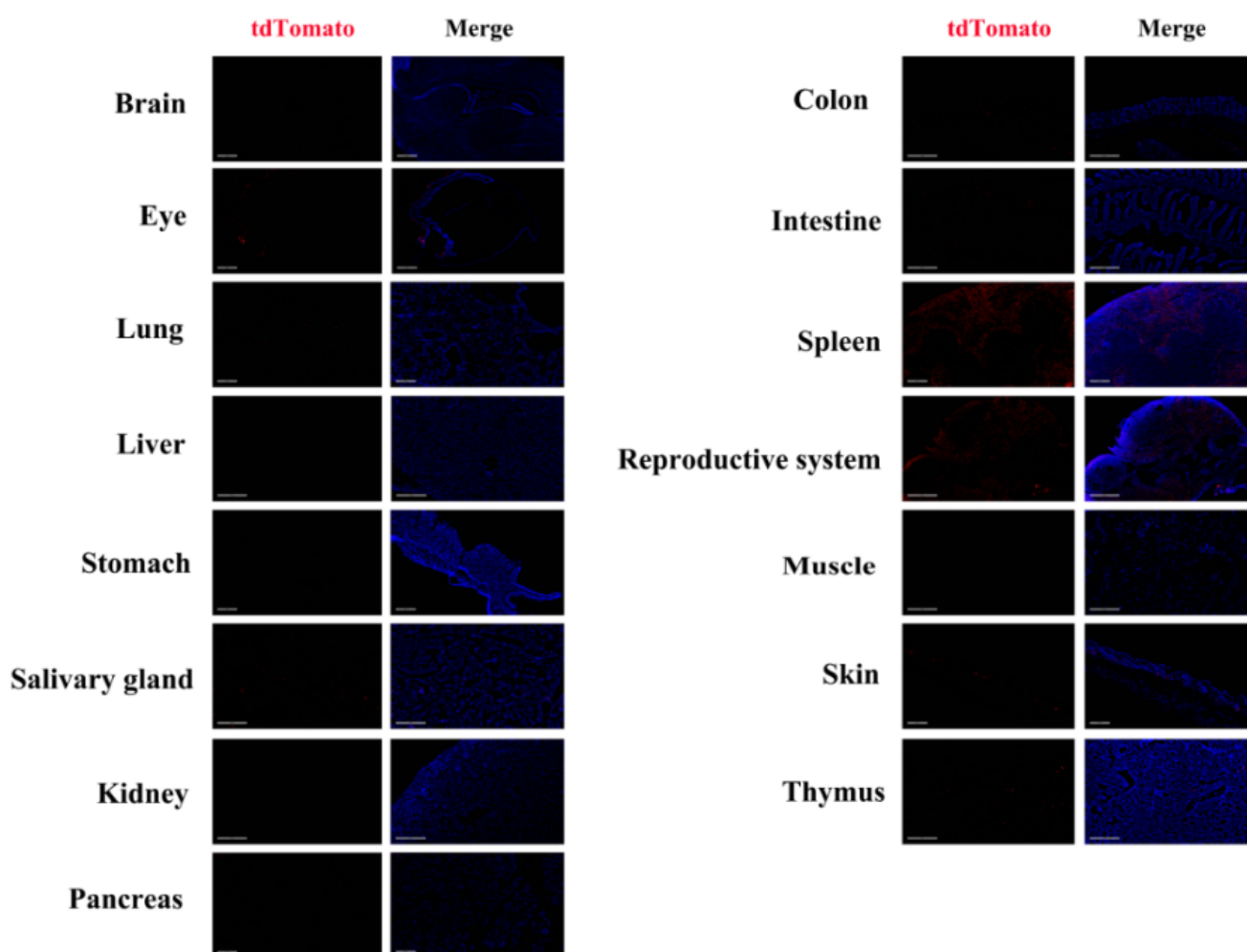


Fig3. Detection of tdTomato (red) in various tissues of *Siglec1<sup>Cre/+</sup>; Rosa26<sup>tdTomato/+</sup>* mice. (For more detailed information please contact our technical advisor.)