

H22-hPD-L1

品系基本信息

目录号 NM-GA01-TM01

细胞系名称 H22-*Cd274*^{em1(hPDL1)/Smoc}

品系状态 成瘤性验证完成

品系描述 CD274基因人源化的H22小鼠肝癌细胞

*使用本品系发表的文献需注明: H22-hPD-L1 cell line (Cat. NO. NM-GA01-TM01) was purchased from Shanghai Model Organisms Center, Inc..

验证数据

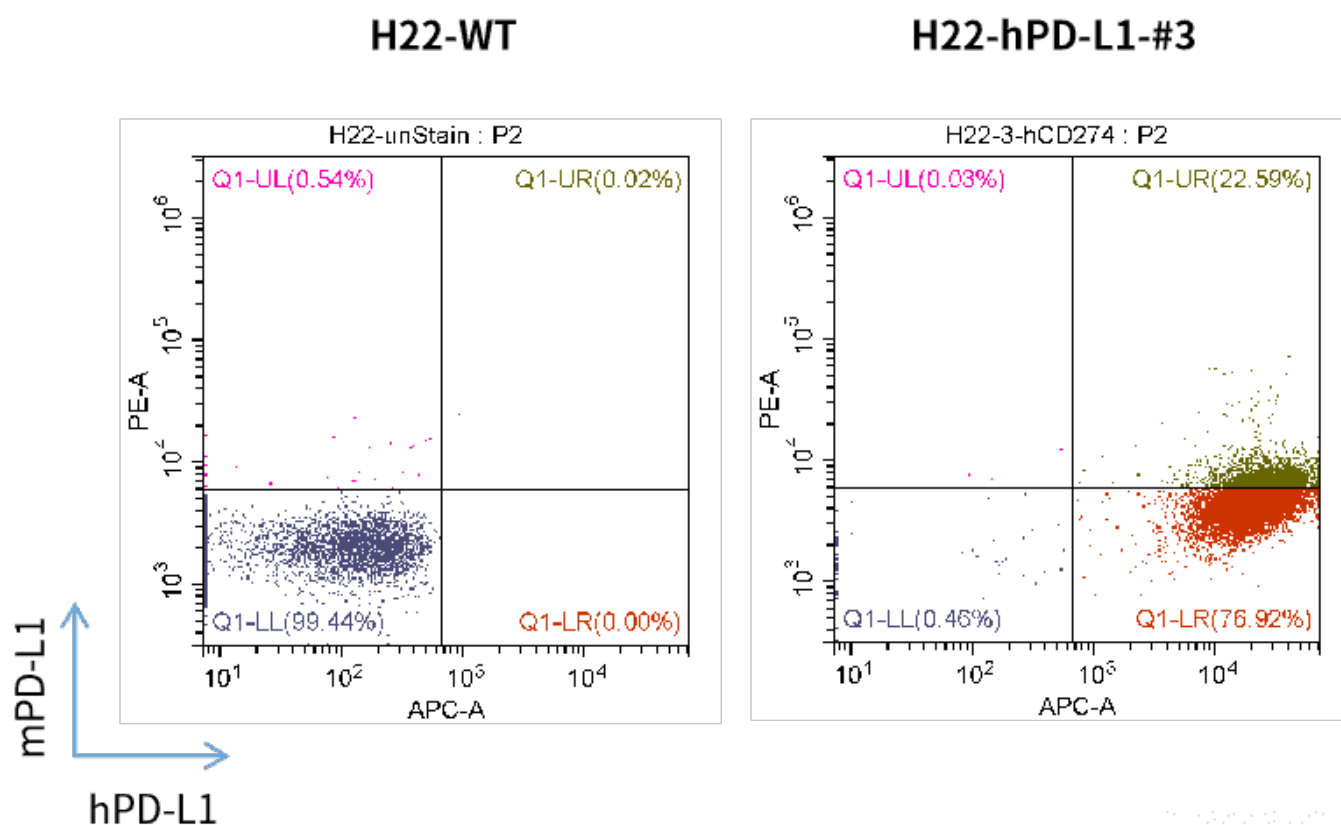


Fig 1. hPD-L1 expression on in vitro cultured cells of H22-hPD-L1

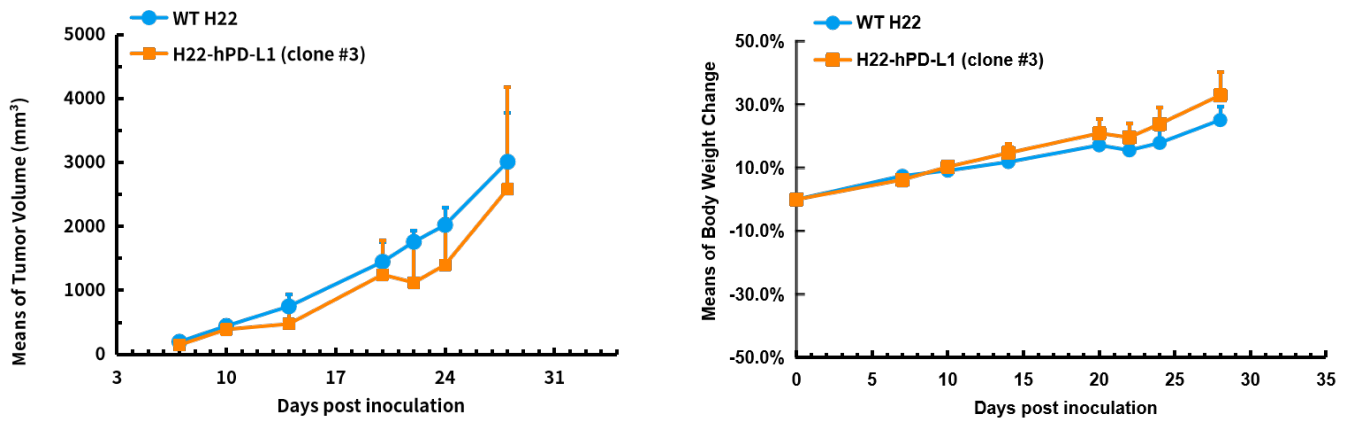


Fig 2. hPD-L1(BALB/c) mice were inoculated with H22-hPD-L1 subcutaneously at 1×10^6 cells/mouse inoculum for tumor development

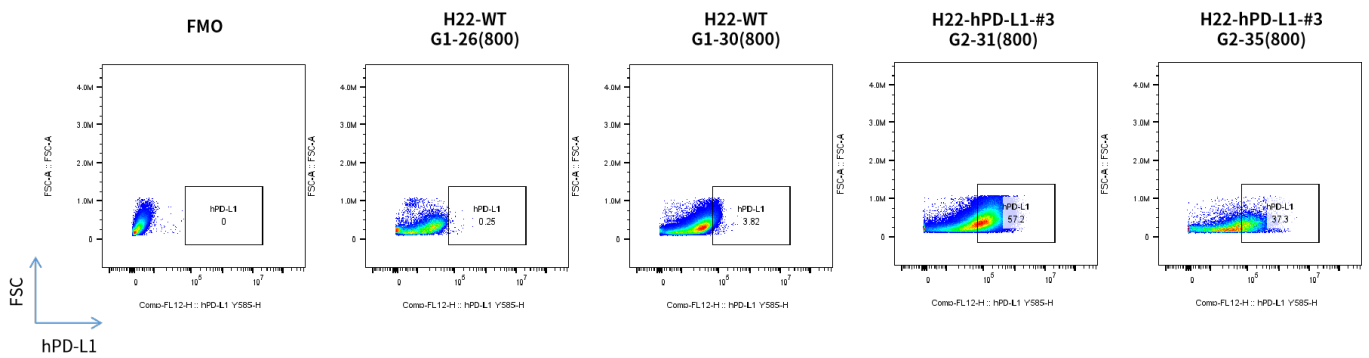


Fig 3. hPD-L1 expression in tumors after in vivo growth of H22-hPD-L1 in wild type hPD-L1(BALB/c) mouse. The tumors were collected at day 11 post tumor cell inoculation.

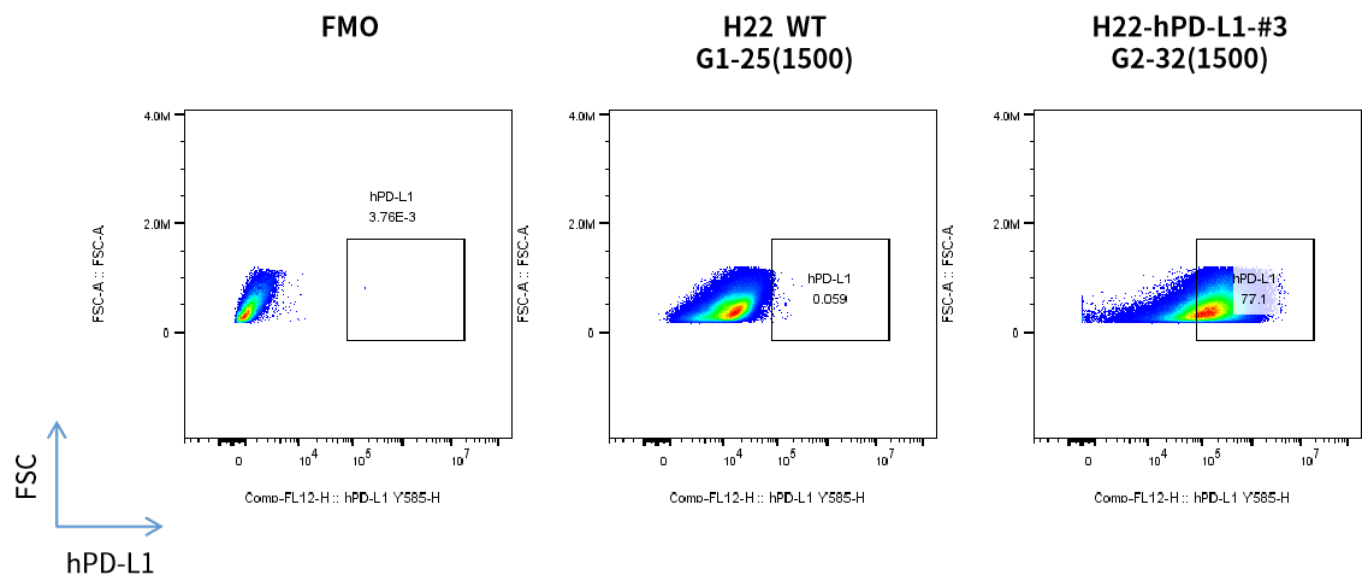


Fig 4. hPD-L1 expression in tumors after in vivo growth of H22-hPD-L1 in wild type hPD-L1(BALB/c) mouse. The tumors were collected at day 21 post tumor cell inoculation.

