

MC38-hCDH17

品系基本信息

目录号 NM-S13-TM22

细胞系名称 MC38-*Ig52*^{em1(hCDH17)}Smoc

品系状态 成瘤性验证完成

品系描述 CDH17基因人源化的MC38结肠癌细胞系

*使用本品系发表的文献需注明: MC38-hCDH17 cell line (Cat. NO. NM-S13-TM22) was purchased from Shanghai Model Organisms Center, Inc..

验证数据

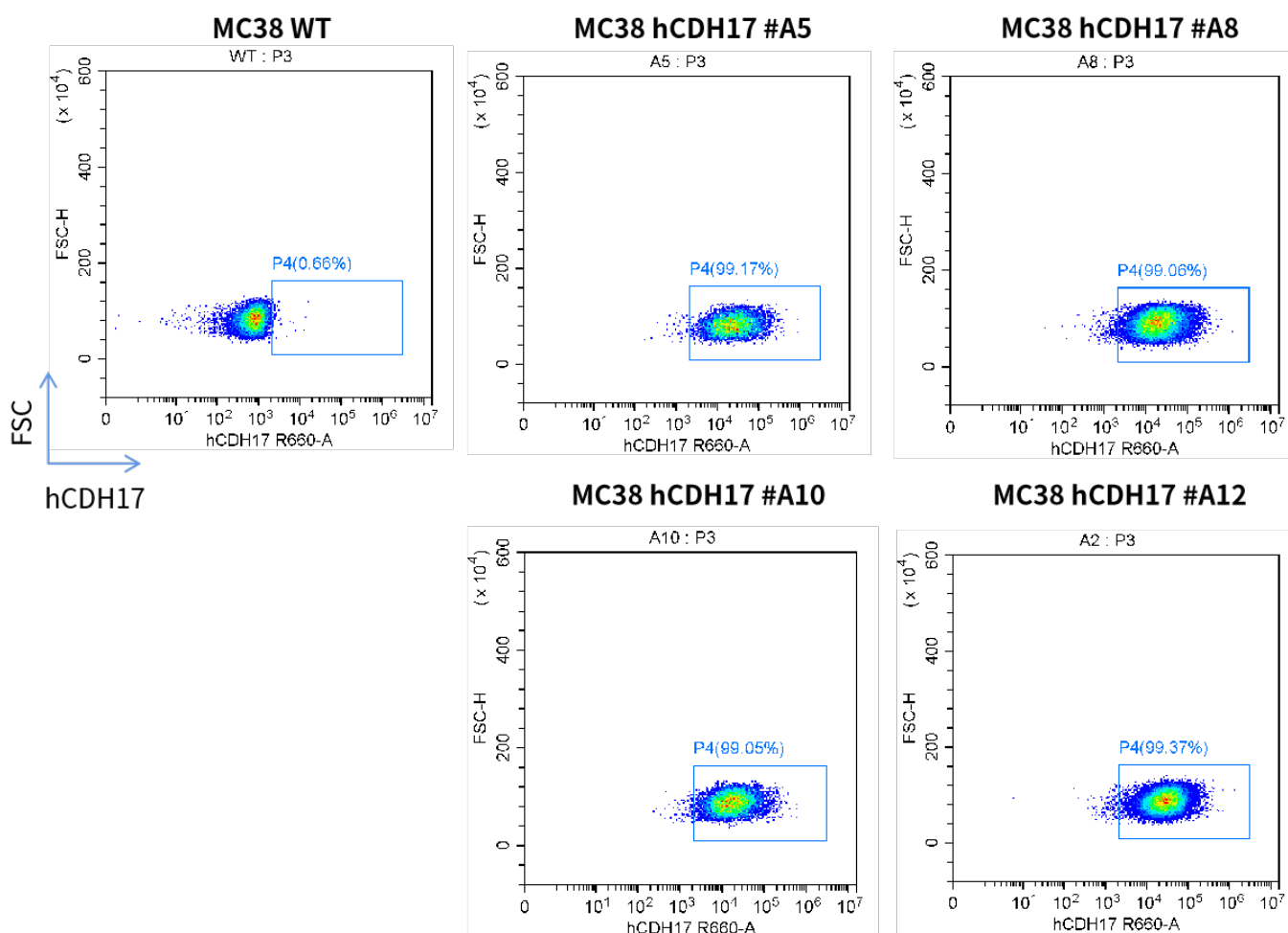


Fig1. CDH17 expression on in vitro cultured cells of MC38-hCDH17 cell line

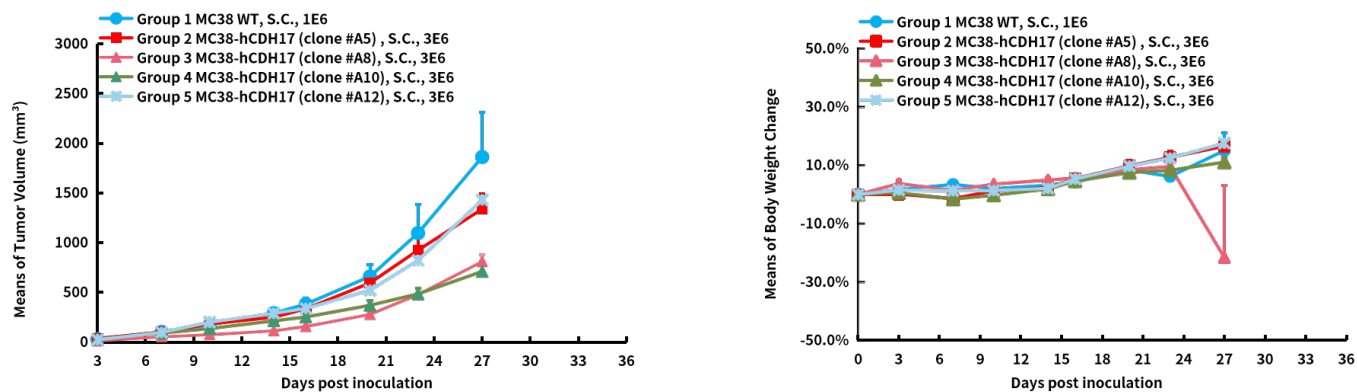


Fig2. In vivo validation of MC38-hCDH17 in C57BL/6 mice

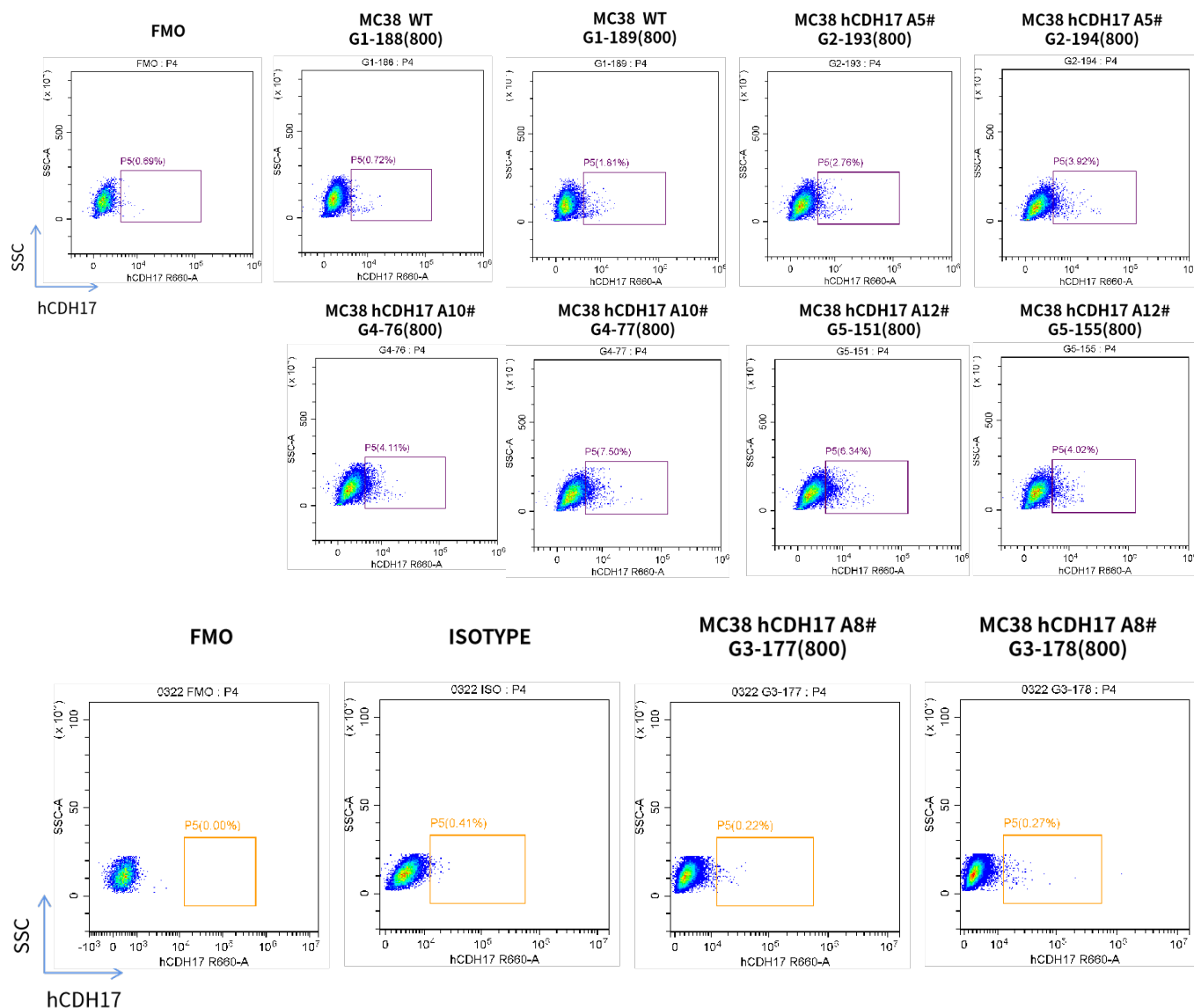


Fig3. CDH17 expression in tumors after in vivo growth of MC38-hCDH17 in wild type C57BL/6 mice