

# MC38-hB7H3

## 品系基本信息

目录号 NM-S13-TM06

细胞系名称 MC38-*Cd276*<sup>em1(hB7H3)/Smoc</sup>

品系状态 成瘤性验证完成

品系描述 B7H3基因人源化的MC38结肠癌细胞系。

\*使用本品系发表的文献需注明: MC38-hB7H3 cell line (Cat. NO. NM-S13-TM06) was purchased from Shanghai Model Organisms Center, Inc..

## 验证数据

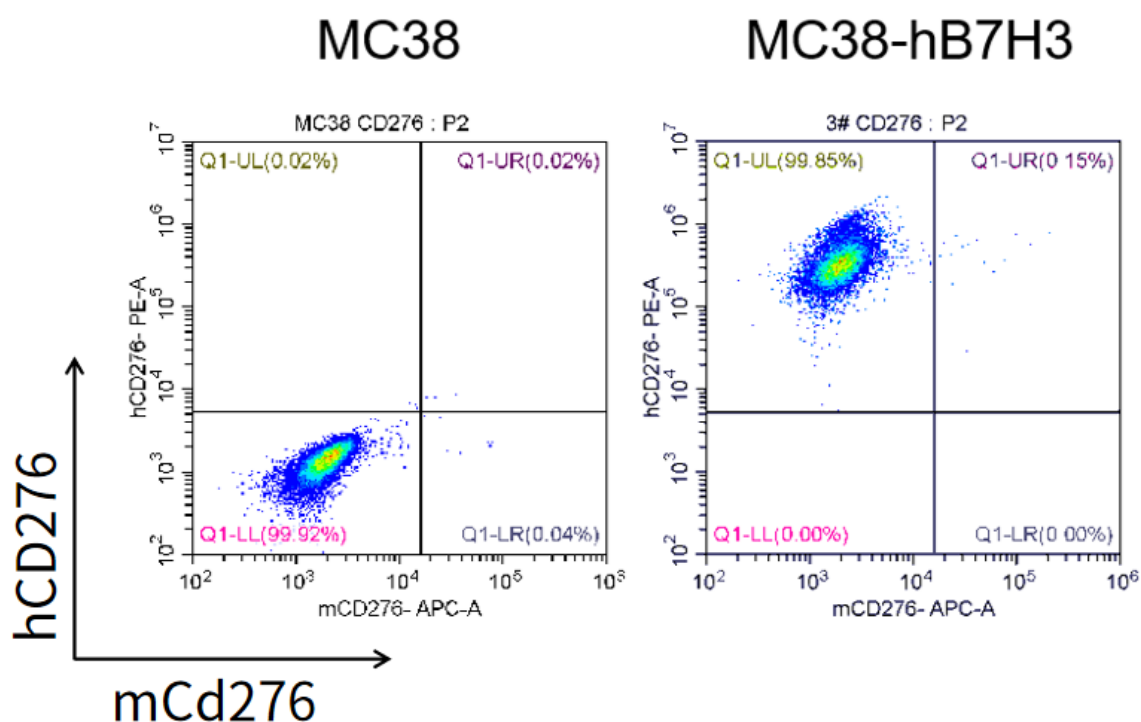


Figure 1. hB7H3 expression in wild-type MC38 and MC38-hB7H3 cell lines.

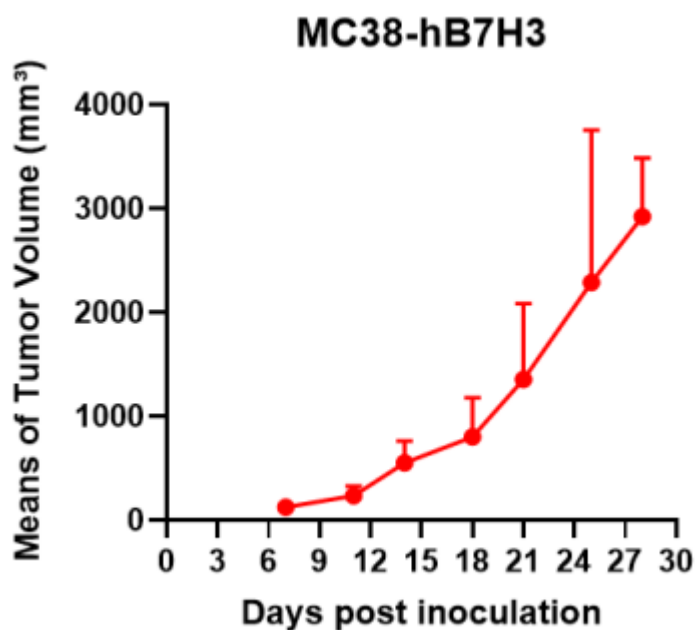


Figure 2. Tumor growth curve of MC38-hB7H3 syngeneic model (n=5).

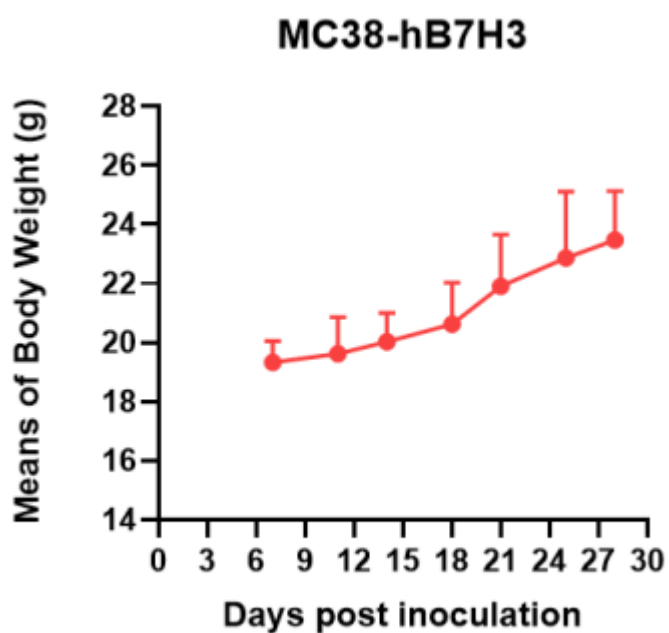


Figure 3. Body weight change of MC38-hB7H3 syngeneic model (n=5).

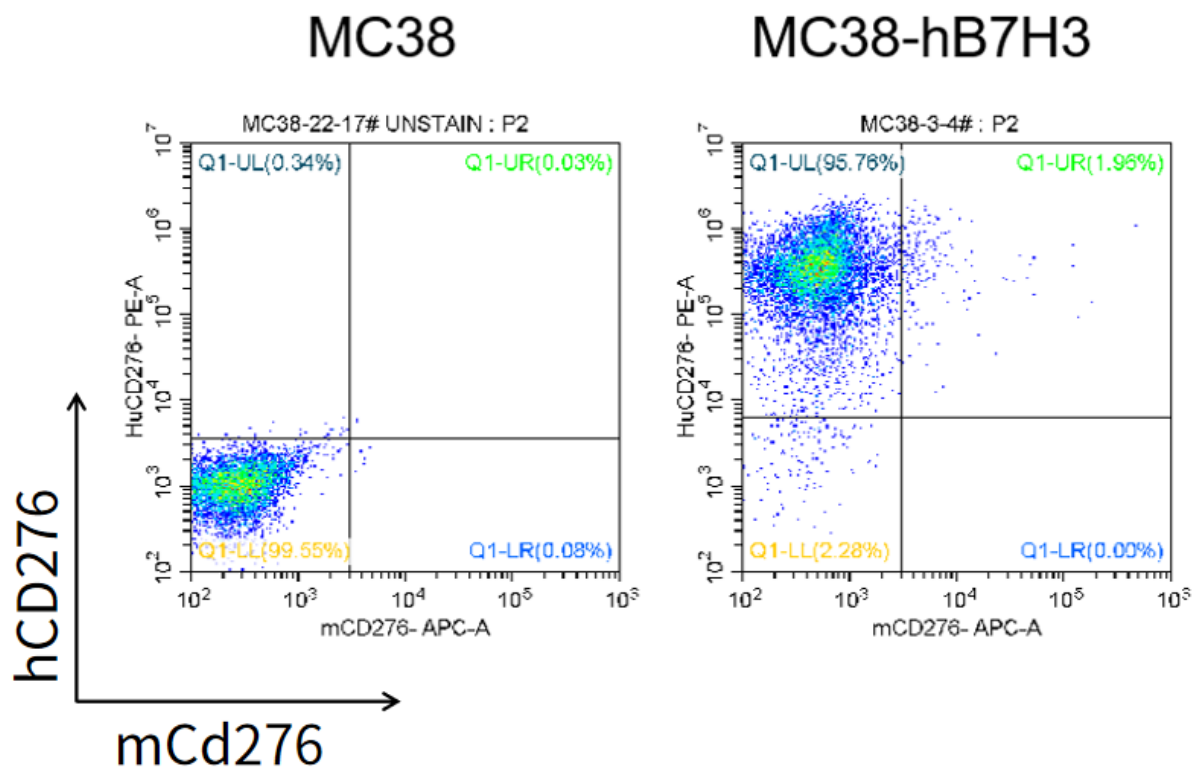


Figure 4. The expression of hB7H3 in humanized modified tumors by FACS.